

AFG3L2 Rabbit Polyclonal Antibody



CAB15393

Product Information

Size:

20uL, 50uL, 100uL, 200uL

Observed MW:

89kDa

Calculated MW:

88kDa

Applications:

WB IHC IF

Reactivity:

Human, Mouse, Rat

Protein Background

This gene encodes a protein localized in mitochondria and closely related to paraplegin. The paraplegin gene is responsible for an autosomal recessive form of hereditary spastic paraplegia. This gene is a candidate gene for other hereditary spastic paraplegias or neurodegenerative disorders.

Immunogen information

Gene ID:

10939

Uniprot

Q9Y4W6

Synonyms:

AFG3L2; SCA28; SPAX5

Antibody Information

Recommended dilutions:

WB 1:200 - 1:2000 IHC 1:50
- 1:200 IF 1:50 - 1:200

Source:

Rabbit

Isotype:

IgG

Purification:

Affinity purification

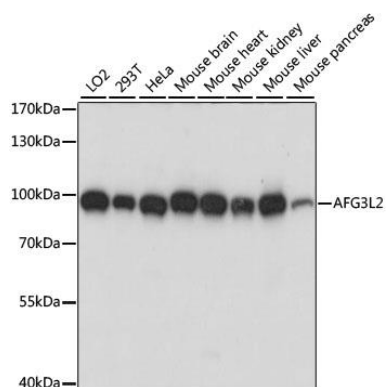
Immunogen:

Recombinant fusion protein containing a sequence corresponding to amino acids 538-797 of human AFG3L2 (NP_006787.2).

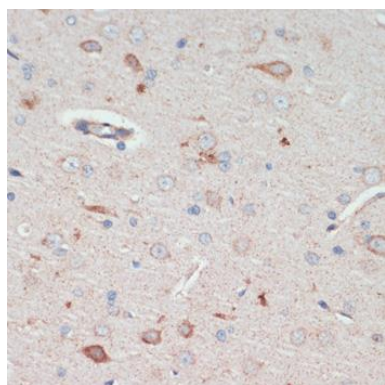
Storage:

Store at -20°C. Avoid freeze / thaw cycles. Buffer: PBS with 0.02% sodium azide, 50% glycerol, pH7.3.

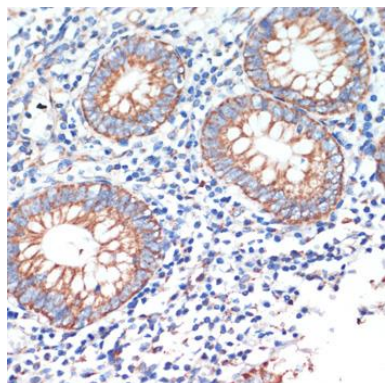
Product Images



Western blot analysis of extracts of various cell lines, using AFG3L2 antibody (CAB15393) at 1:1000 dilution. Secondary antibody: HRP Goat Anti-Rabbit IgG (H+L) (CABS014) at 1:10000 dilution. Lysates/proteins: 25ug per lane. Blocking buffer: 3% nonfat dry milk in TBST. Detection: ECL Basic Kit (CABM00020). Exposure time: 5s.



Immunohistochemistry of paraffin-embedded rat brain using AFG3L2 antibody (CAB15393) at dilution of 1:200 (40x lens).



Immunohistochemistry of paraffin-embedded human appendix using AFG3L2 antibody (CAB15393) at dilution of 1:200 (40x lens).