

# WDHD1 Rabbit Polyclonal Antibody



CAB15396

## Product Information

### Size:

20uL, 50uL, 100uL, 200uL

### Observed MW:

135kDa

### Calculated MW:

112kDa/125kDa

### Applications:

WB IHC IF

### Reactivity:

Human, Rat

## Protein Background

The protein encoded by this gene contains multiple N-terminal WD40 domains and a C-terminal high mobility group (HMG) box. WD40 domains are found in a variety of eukaryotic proteins and may function as adaptor/regulatory modules in signal transduction, pre-mRNA processing and cytoskeleton assembly. HMG boxes are found in many eukaryotic proteins involved in chromatin assembly, transcription and replication. Alternative splicing results in two transcript variants encoding different isoforms.

## Immunogen information

### Gene ID:

11169

### Uniprot

O75717

### Synonyms:

WDHD1; AND-1; AND1; CHTF4; CTF4

## Antibody Information

### Recommended dilutions:

WB 1:200 - 1:2000 IHC 1:50  
- 1:200 IF 1:50 - 1:200

### Source:

Rabbit

### Isotype:

IgG

### Purification:

Affinity purification

### Immunogen:

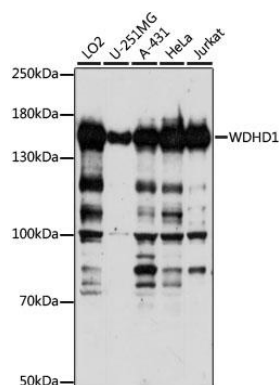
Recombinant fusion protein containing a sequence corresponding to amino acids 830-1129 of human WDHD1 (NP\_009017.1).

### Storage:

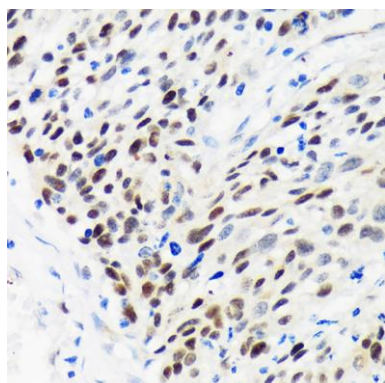
Store at -20°C. Avoid freeze / thaw cycles. Buffer: PBS with 0.02% sodium azide, 50% glycerol, pH7.3.

## Product Images

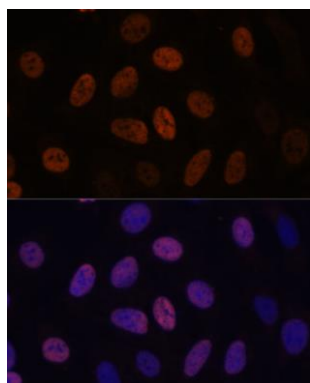
---



Western blot analysis of extracts of various cell lines, using WDHD1 antibody (CAB15396) at 1:1000 dilution. Secondary antibody: HRP Goat Anti-Rabbit IgG (H+L) (CABS014) at 1:10000 dilution. Lysates/proteins: 25ug per lane. Blocking buffer: 3% nonfat dry milk in TBST. Detection: ECL Basic Kit (CABM00020). Exposure time: 10s.



Immunohistochemistry of paraffin-embedded Human esophageal cancer using WDHD1 Rabbit pAb (CAB15396) at dilution of 1:100 (40x lens).



Immunofluorescence analysis of U-2 OS cells using WDHD1 antibody (CAB15396) at dilution of 1:100. Blue: DAPI for nuclear staining.