

TNFR1 Rabbit Polyclonal Antibody



CAB1540

Product Information

Size:

20uL, 50uL, 100uL, 200uL

Observed MW:

55kDa

Calculated MW:

24kDa/25kDa/38kDa/50kDa

Applications:

WB IHC IF

Reactivity:

Human, Mouse, Rat

Antibody Information

Recommended dilutions:

WB 1:500 - 1:2000 IHC 1:50
- 1:200 IF 1:50 - 1:200

Source:

Rabbit

Isotype:

IgG

Purification:

Affinity purification

Protein Background

This gene encodes a member of the TNF receptor superfamily of proteins. The encoded receptor is found in membrane-bound and soluble forms that interact with membrane-bound and soluble forms, respectively, of its ligand, tumor necrosis factor alpha. Binding of membrane-bound tumor necrosis factor alpha to the membrane-bound receptor induces receptor trimerization and activation, which plays a role in cell survival, apoptosis, and inflammation. Proteolytic processing of the encoded receptor results in release of the soluble form of the receptor, which can interact with free tumor necrosis factor alpha to inhibit inflammation. Mutations in this gene underlie tumor necrosis factor receptor-associated periodic syndrome (TRAPS), characterized by fever, abdominal pain and other features. Mutations in this gene may also be associated with multiple sclerosis in human patients.

Immunogen information

Gene ID:

7132

Uniprot

P19438

Synonyms:

TNFRSF1A; CD120a; FPF; TBP1; TNF-R; TNF-R-I; TNF-R55; TNFAR;
TNFR1; TNFR55; TNFR60; p55; p55-R; p60

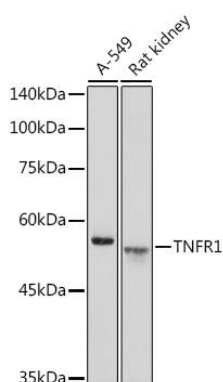
Immunogen:

Recombinant fusion protein containing a sequence corresponding to amino acids 22-211 of human TNFR1 (NP_001056.1).

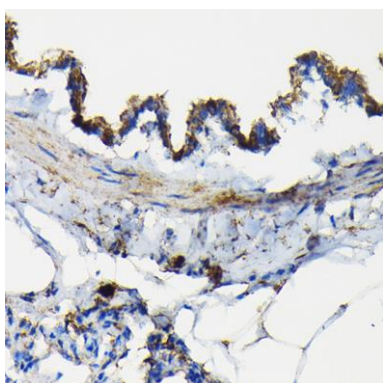
Storage:

Store at -20°C. Avoid freeze / thaw cycles. Buffer: PBS with 0.02% sodium azide, 50% glycerol, pH7.3.

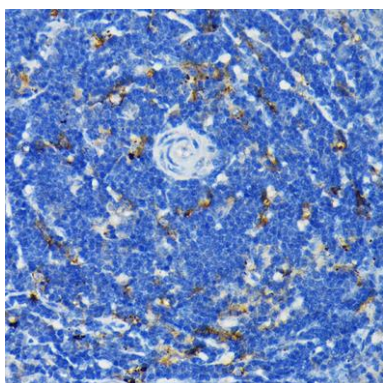
Product Images



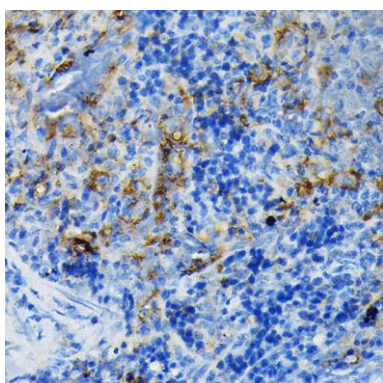
Western blot analysis of extracts of various cell lines, using TNFR1 antibody (CAB1540) at 1:1000 dilution. Secondary antibody: HRP Goat Anti-Rabbit IgG (H+L) (CABS014) at 1:10000 dilution. Lysates/proteins: 25ug per lane. Blocking buffer: 3% nonfat dry milk in TBST. Detection: ECL Enhanced Kit (RM00035). Exposure time: 90s.



Immunohistochemistry of paraffin-embedded rat lung using TNFR1 Rabbit pAb (CAB1540) at dilution of 1:100 (40x lens).



Immunohistochemistry of paraffin-embedded rat spleen using TNFR1 Rabbit pAb (CAB1540) at dilution of 1:100 (40x lens).



Immunohistochemistry of paraffin-embedded mouse spleen using TNFR1 Rabbit pAb (CAB1540) at dilution of 1:100 (40x lens).