

**[KO Validated] PDCD10 Rabbit Polyclonal
Antibody
CAB15400**



Product Information

Size:

20uL, 50uL, 100uL, 200uL

Observed MW:

26kDa

Calculated MW:

24kDa

Applications:

WB IF

Reactivity:

Human, Mouse

Protein Background

This gene encodes an evolutionarily conserved protein associated with cell apoptosis. The protein interacts with the serine/threonine protein kinase MST4 to modulate the extracellular signal-regulated kinase (ERK) pathway. It also interacts with and is phosphorylated by serine/threonine kinase 25, and is thought to function in a signaling pathway essential for vascular development. Mutations in this gene are one cause of cerebral cavernous malformations, which are vascular malformations that cause seizures and cerebral hemorrhages. Multiple alternatively spliced variants, encoding the same protein, have been identified.

Immunogen information

Gene ID:

11235

Uniprot

Q9BUL8

Synonyms:

PDCD10; CCM3; TFAR15

Antibody Information

Recommended dilutions:

WB 1:200 - 1:2000 IF 1:50 - 1:200

Source:

Rabbit

Isotype:

IgG

Immunogen:

Recombinant fusion protein containing a sequence corresponding to amino acids 1-212 of human PDCD10 (NP_009148.2).

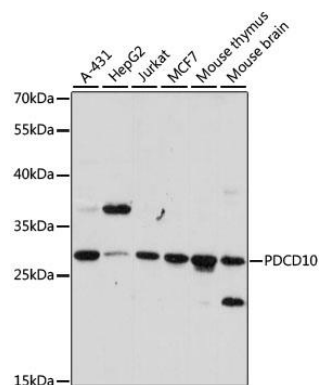
Storage:

Store at -20°C. Avoid freeze / thaw cycles. Buffer: PBS with 0.02% sodium azide, 50% glycerol, pH7.3.

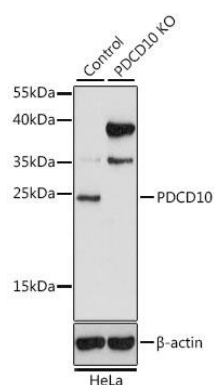
Purification:

Affinity purification

Product Images



Western blot analysis of extracts of various cell lines, using PDCD10 antibody (CAB15400) at 1:1000 dilution. Secondary antibody: HRP Goat Anti-Rabbit IgG (H+L) (CABS014) at 1:10000 dilution. Lysates/proteins: 25ug per lane. Blocking buffer: 3% nonfat dry milk in TBST. Detection: ECL Basic Kit (CABM00020). Exposure time: 90s.



Western blot analysis of extracts from normal (control) and PDCD10 knockout (KO) HeLa cells, using PDCD10 antibody (CAB15400) at 1:1000 dilution. Secondary antibody: HRP Goat Anti-Rabbit IgG (H+L) (CABS014) at 1:10000 dilution. Lysates/proteins: 25ug per lane. Blocking buffer: 3% nonfat dry milk in TBST. Detection: ECL Basic Kit (CABM00020). Exposure time: 15s.