

# CRTC1 Rabbit Polyclonal Antibody



CAB15412

---

## Product Information

### Size:

20uL, 50uL, 100uL, 200uL

### Observed MW:

80kDa

### Calculated MW:

62kDa/67kDa/68kDa

### Applications:

WB

### Reactivity:

Mouse, Rat

## Antibody Information

### Recommended dilutions:

WB 1:200 - 1:2000

### Source:

Rabbit

### Isotype:

IgG

### Purification:

Affinity purification

## Protein Background

### Immunogen information

#### Gene ID:

23373

#### Uniprot

Q6UUV9

#### Synonyms:

CRTC1; MECT1; TORC-1; TORC1; WAMTP1

#### Immunogen:

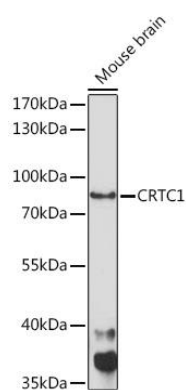
Recombinant fusion protein containing a sequence corresponding to amino acids 1-200 of human CRTC1 (NP\_056136.2).

#### Storage:

Store at -20°C. Avoid freeze / thaw cycles. Buffer: PBS with 0.02% sodium azide, 50% glycerol, pH7.3.

## Product Images

---



Western blot analysis of extracts of Mouse brain, using CRTCL Rabbit pAb (CAB15412) at 1:1000 dilution. Secondary antibody: HRP Goat Anti-Rabbit IgG (H+L) (CABS014) at 1:10000 dilution. Lysates/proteins: 25ug per lane. Blocking buffer: 3% nonfat dry milk in TBST. Detection: ECL Enhanced Kit (CABM00021). Exposure time: 90s.