

RUSC1 Rabbit Polyclonal Antibody



CAB15417

Product Information

Size:

20uL, 50uL, 100uL, 200uL

Observed MW:

55/100kDa

Calculated MW:

46kDa/52kDa/85kDa/96kDa

Applications:

WB IF

Reactivity:

Human, Mouse, Rat

Antibody Information

Recommended dilutions:

WB 1:200 - 1:2000 IF 1:50 - 1:200

Source:

Rabbit

Isotype:

IgG

Purification:

Affinity purification

Protein Background

Immunogen information

Gene ID:

23623

Uniprot

Q9BVN2

Synonyms:

RUSC1; NESCA

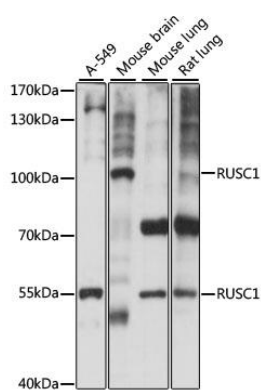
Immunogen:

Recombinant fusion protein containing a sequence corresponding to amino acids 1-320 of human RUSC1 (NP_055143.2).

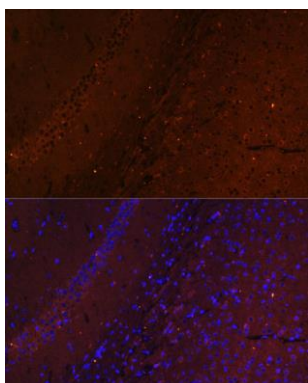
Storage:

Store at -20°C. Avoid freeze / thaw cycles. Buffer: PBS with 0.02% sodium azide, 50% glycerol, pH7.3.

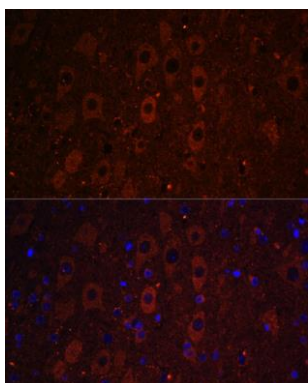
Product Images



Western blot analysis of extracts of various cell lines, using RUSC1 antibody (CAB15417) at 1:1000 dilution. Secondary antibody: HRP Goat Anti-Rabbit IgG (H+L) (CABS014) at 1:10000 dilution. Lysates/proteins: 25ug per lane. Blocking buffer: 3% nonfat dry milk in TBST. Detection: ECL Basic Kit (CABM00020). Exposure time: 10s.



Immunofluorescence analysis of mouse brain using RUSC1 antibody (CAB15417) at dilution of 1:100. Blue: DAPI for nuclear staining.



Immunofluorescence analysis of mouse brain using RUSC1 antibody (CAB15417) at dilution of 1:100. Blue: DAPI for nuclear staining.