

# EDC4 Rabbit Polyclonal Antibody



**CAB15418**

---

## Product Information

### Size:

20uL, 50uL, 100uL, 200uL

### Observed MW:

160-180kDa

### Calculated MW:

109kDa/151kDa

### Applications:

WB

### Reactivity:

Human, Mouse

## Antibody Information

### Recommended dilutions:

WB 1:200 - 1:2000

### Source:

Rabbit

### Isotype:

IgG

### Purification:

Affinity purification

## Protein Background

### Immunogen information

#### Gene ID:

23644

#### Uniprot

Q6P2E9

#### Synonyms:

EDC4; GE1; Ge-1; HEDL5; HEDLS; RCD-8; RCD8

#### Immunogen:

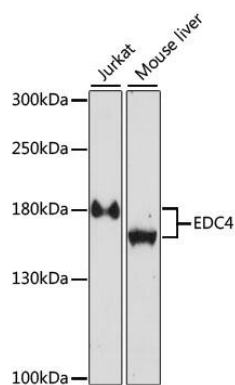
Recombinant fusion protein containing a sequence corresponding to amino acids 800-1100 of human EDC4 (NP\_055144.3).

#### Storage:

Store at -20°C. Avoid freeze / thaw cycles. Buffer: PBS with 0.02% sodium azide, 50% glycerol, pH7.3.

## Product Images

---



Western blot analysis of extracts of various cell lines, using EDC4 antibody (CAB15418) at 1:1000 dilution. Secondary antibody: HRP Goat Anti-Rabbit IgG (H+L) (CABS014) at 1:10000 dilution. Lysates/proteins: 25ug per lane. Blocking buffer: 3% nonfat dry milk in TBST. Detection: ECL Enhanced Kit (CABM00021). Exposure time: 30s.