

MYOF Rabbit Polyclonal Antibody



CAB15427

Product Information

Size:

20uL, 50uL, 100uL, 200uL

Observed MW:

250kDa

Calculated MW:

17kDa/46kDa/49kDa/179kDa
/229kDa/233kDa/234kDa

Applications:

WB

Reactivity:

Human, Mouse

Antibody Information

Recommended dilutions:

WB 1:200 - 1:2000

Source:

Rabbit

Isotype:

IgG

Purification:

Affinity purification

Protein Background

Mutations in dysferlin, a protein associated with the plasma membrane, can cause muscle weakness that affects both proximal and distal muscles. The protein encoded by this gene is a type II membrane protein that is structurally similar to dysferlin. It is a member of the ferlin family and associates with both plasma and nuclear membranes. The protein contains C2 domains that play a role in calcium-mediated membrane fusion events, suggesting that it may be involved in membrane regeneration and repair. Two transcript variants encoding different isoforms have been found for this gene. Other possible variants have been detected, but their full-length nature has not been determined.

Immunogen information

Gene ID:

26509

Uniprot

Q9NZM1

Synonyms:

MYOF; FER1L3; myoferlin

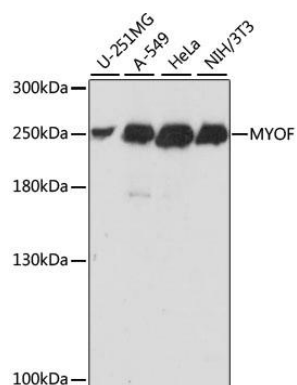
Immunogen:

Recombinant fusion protein containing a sequence corresponding to amino acids 1-190 of human MYOF (NP_038479.1).

Storage:

Store at -20°C. Avoid freeze / thaw cycles. Buffer: PBS with 0.02% sodium azide, 50% glycerol, pH7.3.

Product Images



Western blot analysis of extracts of various cell lines, using MYOF antibody (CAB15427) at 1:1000 dilution. Secondary antibody: HRP Goat Anti-Rabbit IgG (H+L) (CABS014) at 1:10000 dilution. Lysates/proteins: 25ug per lane. Blocking buffer: 3% nonfat dry milk in TBST. Detection: ECL Basic Kit (CABM00020). Exposure time: 2s.