

# SULT1C4 Rabbit Polyclonal Antibody



CAB15433

---

## Product Information

### Size:

20uL, 50uL, 100uL, 200uL

### Observed MW:

36kDa

### Calculated MW:

26kDa/35kDa

### Applications:

WB IF

### Reactivity:

Human, Mouse, Rat

## Protein Background

Sulfotransferase enzymes catalyze the sulfate conjugation of many hormones, neurotransmitters, drugs, and xenobiotic compounds. These cytosolic enzymes are different in their tissue distributions and substrate specificities. The gene structure (number and length of exons) is similar among family members. This gene encodes a protein that belongs to the SULT1 subfamily, responsible for transferring a sulfo moiety from PAPS to phenol-containing compounds.

## Immunogen information

### Gene ID:

27233

### Uniprot

O75897

### Synonyms:

SULT1C4; SULT1C; SULT1C2

## Antibody Information

### Recommended dilutions:

WB 1:200 - 1:2000 IF 1:50 - 1:200

### Source:

Rabbit

### Isotype:

IgG

### Purification:

Affinity purification

### Immunogen:

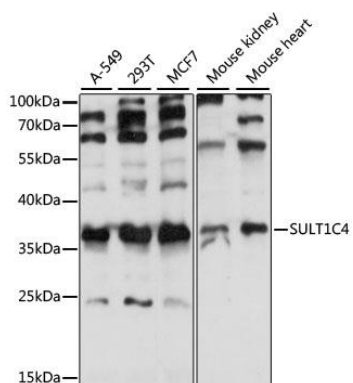
Recombinant fusion protein containing a sequence corresponding to amino acids 1-95 of human SULT1C4 (NP\_006579.2).

### Storage:

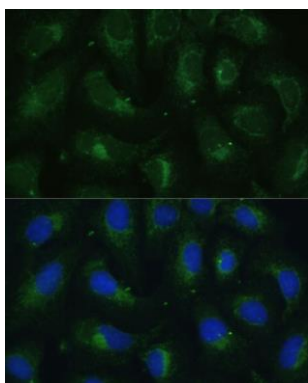
Store at -20°C. Avoid freeze / thaw cycles. Buffer: PBS with 0.02% sodium azide, 50% glycerol, pH7.3.

## Product Images

---



Western blot analysis of extracts of various cell lines, using SULT1C4 antibody (CAB15433) at 1:1000 dilution. Secondary antibody: HRP Goat Anti-Rabbit IgG (H+L) (CABS014) at 1:10000 dilution. Lysates/proteins: 25ug per lane. Blocking buffer: 3% nonfat dry milk in TBST. Detection: ECL Basic Kit (CABM00020). Exposure time: 2s.



Immunofluorescence analysis of U-2 OS cells using SULT1C4 antibody (CAB15433) at dilution of 1:100. Blue: DAPI for nuclear staining.