

# ADAMDEC1 Rabbit Polyclonal Antibody



CAB15435

---

## Product Information

### Size:

20uL, 50uL, 100uL, 200uL

### Observed MW:

42-50kDa

### Calculated MW:

43kDa/52kDa

### Applications:

WB

### Reactivity:

Human

## Protein Background

This encoded protein is thought to be a secreted protein belonging to the disintegrin metalloproteinase family. Its expression is upregulated during dendritic cells maturation. This protein may play an important role in dendritic cell function and their interactions with germinal center T cells.

## Immunogen information

### Gene ID:

27299

### Uniprot

O15204

### Synonyms:

ADAMDEC1; M12.219; ADAM DEC1

## Antibody Information

### Recommended dilutions:

WB 1:200 - 1:2000

### Source:

Rabbit

### Isotype:

IgG

### Purification:

Affinity purification

### Immunogen:

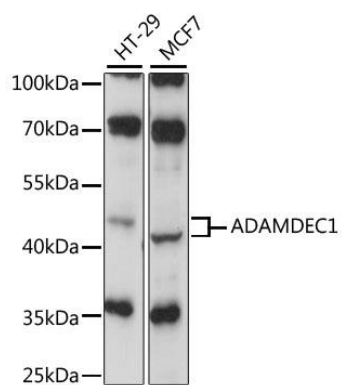
Recombinant fusion protein containing a sequence corresponding to amino acids 206-470 of human ADAMDEC1 (NP\_055294.1).

### Storage:

Store at -20°C. Avoid freeze / thaw cycles. Buffer: PBS with 0.02% sodium azide, 50% glycerol, pH7.3.

## Product Images

---



Western blot analysis of extracts of various cell lines, using ADAMDEC1 antibody (CAB15435) at 1:1000 dilution. Secondary antibody: HRP Goat Anti-Rabbit IgG (H+L) (CABS014) at 1:10000 dilution. Lysates/proteins: 25ug per lane. Blocking buffer: 3% nonfat dry milk in TBST. Detection: ECL Basic Kit (CABM00020). Exposure time: 30s.