

# [KO Validated] GIT1 Rabbit Polyclonal Antibody



CAB15437

## Product Information

### Size:

20uL, 50uL, 100uL, 200uL

### Observed MW:

100kDa

### Calculated MW:

19kDa/84kDa/85kDa

### Applications:

WB IF

### Reactivity:

Human, Mouse, Rat

## Antibody Information

### Recommended dilutions:

WB 1:200 - 1:2000 IF 1:50 - 1:200

### Source:

Rabbit

### Isotype:

IgG

### Purification:

Affinity purification

## Protein Background

### Immunogen information

#### Gene ID:

28964

#### Uniprot

Q9Y2X7

#### Synonyms:

GIT1

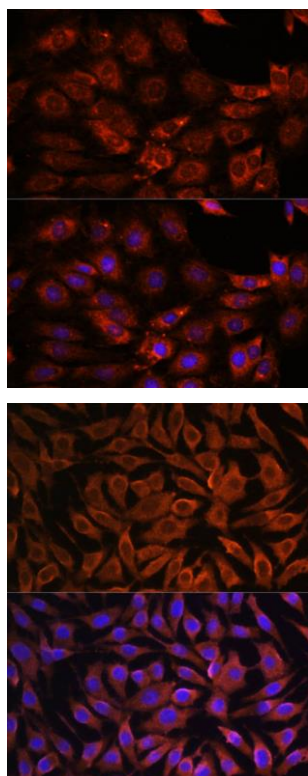
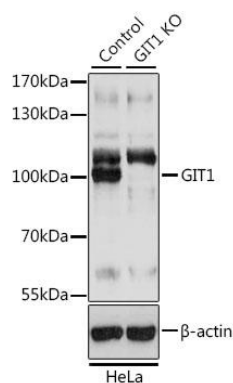
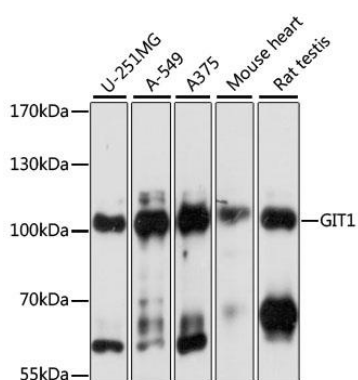
#### Immunogen:

Recombinant fusion protein containing a sequence corresponding to amino acids 460-640 of human GIT1 (NP\_054749.2).

#### Storage:

Store at -20°C. Avoid freeze / thaw cycles. Buffer: PBS with 0.02% sodium azide, 50% glycerol, pH7.3.

## Product Images



Western blot analysis of extracts of various cell lines, using GIT1 antibody (CAB15437) at 1:1000 dilution. Secondary antibody: HRP Goat Anti-Rabbit IgG (H+L) (CABS014) at 1:10000 dilution. Lysates/proteins: 25ug per lane. Blocking buffer: 3% nonfat dry milk in TBST. Detection: ECL Basic Kit (CABM00020). Exposure time: 1s.

Western blot analysis of extracts from normal (control) and GIT1 knockout (KO) HeLa cells, using GIT1 antibody (CAB15437) at 1:3000 dilution. Secondary antibody: HRP Goat Anti-Rabbit IgG (H+L) (CABS014) at 1:10000 dilution. Lysates/proteins: 25ug per lane. Blocking buffer: 3% nonfat dry milk in TBST. Detection: ECL Basic Kit (CABM00020). Exposure time: 1s.

Immunofluorescence analysis of C6 cells using [KO] GIT1 antibody (CAB15437) at dilution of 1:100. Blue: DAPI for nuclear staining.

Immunofluorescence analysis of L929 cells using [KO] GIT1 antibody (CAB15437) at dilution of 1:100. Blue: DAPI for nuclear staining.