

# VILL Rabbit Polyclonal Antibody



**CAB15440**

---

## Product Information

### Size:

20uL, 50uL, 100uL, 200uL

### Observed MW:

96kDa

### Calculated MW:

94kDa/95kDa

### Applications:

WB IF

### Reactivity:

Human, Mouse, Rat

## Antibody Information

### Recommended dilutions:

WB 1:200 - 1:2000 IF 1:50 - 1:200

### Source:

Rabbit

### Isotype:

IgG

### Purification:

Affinity purification

## Protein Background

The protein encoded by this gene belongs to the villin/gelsolin family. It contains 6 gelsolin-like repeats and a headpiece domain. It may play a role in actin-bundling.

## Immunogen information

### Gene ID:

50853

### Uniprot

O15195

### Synonyms:

VILL

### Immunogen:

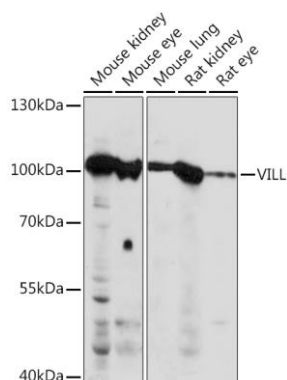
Recombinant fusion protein containing a sequence corresponding to amino acids 637-856 of human VILL (NP\_056957.3).

### Storage:

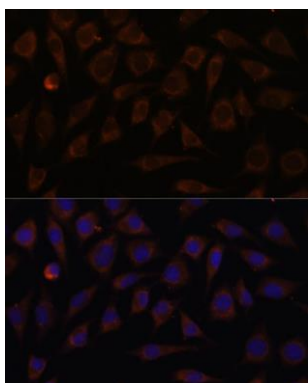
Store at -20°C. Avoid freeze / thaw cycles. Buffer: PBS with 0.02% sodium azide, 50% glycerol, pH7.3.

## Product Images

---



Western blot analysis of extracts of various cell lines, using VILL Rabbit pAb (CAB15440) at 1:1000 dilution. Secondary antibody: HRP Goat Anti-Rabbit IgG (H+L) (CABS014) at 1:10000 dilution. Lysates/proteins: 25ug per lane. Blocking buffer: 3% nonfat dry milk in TBST. Detection: ECL Basic Kit (CABM00020). Exposure time: 90s.



Immunofluorescence analysis of L929 cells using VILL antibody (CAB15440) at dilution of 1:100. Blue: DAPI for nuclear staining.