

# PIGX Rabbit Polyclonal Antibody



CAB15460

---

## Product Information

### Size:

20uL, 50uL, 100uL, 200uL

### Observed MW:

29kDa

### Calculated MW:

28kDa/30kDa

### Applications:

WB

### Reactivity:

Rat

## Protein Background

This gene encodes a type I transmembrane protein in the endoplasmic reticulum (ER). The protein is an essential component of glycosylphosphatidylinositol-mannosyltransferase I, which transfers the first of the four mannoses in the GPI-anchor precursors during GPI-anchor biosynthesis. Studies in rat indicate that the protein is translated from a non-AUG translation initiation site. Alternative splicing results in multiple transcript variants.

## Immunogen information

### Gene ID:

54965

### Uniprot

Q8TBF5

### Synonyms:

PIGX; PIG-X

## Antibody Information

### Recommended dilutions:

WB 1:200 - 1:2000

### Source:

Rabbit

### Isotype:

IgG

### Purification:

Affinity purification

### Immunogen:

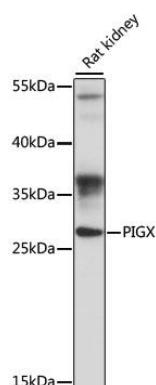
Recombinant fusion protein containing a sequence corresponding to amino acids 80-220 of human PIGX (NP\_060331.3).

### Storage:

Store at -20°C. Avoid freeze / thaw cycles. Buffer: PBS with 0.02% sodium azide, 50% glycerol, pH7.3.

## Product Images

---



Western blot analysis of extracts of rat kidney, using PIGX antibody (CAB15460) at 1:1000 dilution. Secondary antibody: HRP Goat Anti-Rabbit IgG (H+L) (CABS014) at 1:10000 dilution. Lysates/proteins: 25ug per lane. Blocking buffer: 3% nonfat dry milk in TBST. Detection: ECL Basic Kit (CABM00020). Exposure time: 90s.