

# PLEKHB2 Rabbit Polyclonal Antibody



CAB15462

---

## Product Information

### Size:

20uL, 50uL, 100uL, 200uL

### Observed MW:

15kDa

### Calculated MW:

19kDa/20kDa/24kDa/25kDa/  
34kDa

### Applications:

WB IHC

### Reactivity:

Human

## Antibody Information

### Recommended dilutions:

WB 1:200 - 1:2000 IHC 1:50  
- 1:200

### Source:

Rabbit

### Isotype:

IgG

### Purification:

Affinity purification

## Protein Background

### Immunogen information

#### Gene ID:

55041

#### Uniprot

Q96CS7

#### Synonyms:

PLEKHB2; EVT2

#### Immunogen:

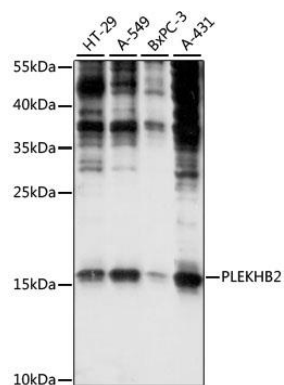
Recombinant fusion protein containing a sequence corresponding to amino acids 1-222 of human PLEKHB2 (NP\_001094093.1).

#### Storage:

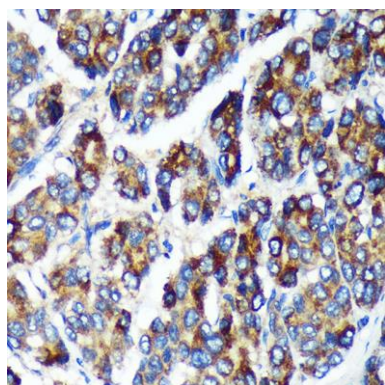
Store at -20°C. Avoid freeze / thaw cycles. Buffer: PBS with 0.02% sodium azide, 50% glycerol, pH7.3.

## Product Images

---



Western blot analysis of extracts of various cell lines, using PLEKHB2 antibody (CAB15462) at 1:1000 dilution. Secondary antibody: HRP Goat Anti-Rabbit IgG (H+L) (CABS014) at 1:10000 dilution. Lysates/proteins: 25ug per lane. Blocking buffer: 3% nonfat dry milk in TBST. Detection: ECL Basic Kit (CABM00020). Exposure time: 30s.



Immunohistochemistry of paraffin-embedded Human liver cancer using PLEKHB2 Rabbit pAb (CAB15462) at dilution of 1:100 (40x lens).