

UBR7 Rabbit Polyclonal Antibody



CAB15464

Product Information

Size:

20uL, 50uL, 100uL, 200uL

Observed MW:

50kDa

Calculated MW:

47kDa

Applications:

WB

Reactivity:

Human, Mouse, Rat

Protein Background

This gene encodes a UBR box-containing protein that belongs to the E3 ubiquitin ligase family. The protein also contains a plant homeodomain (PHD) in the C-terminus. In mammals, the encoded protein recognizes N-degrons, the destabilizing N-terminal residues of short-lived proteins, which results in ubiquitinylation, and proteolysis via the proteasome.

Immunogen information

Gene ID:

55148

Uniprot

Q8N806

Synonyms:

UBR7; C14orf130

Antibody Information

Recommended dilutions:

WB 1:200 - 1:2000

Source:

Rabbit

Isotype:

IgG

Purification:

Affinity purification

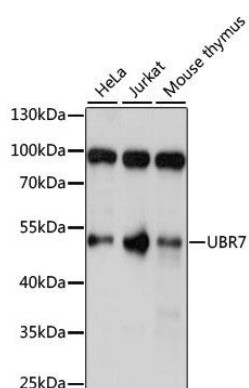
Immunogen:

Recombinant fusion protein containing a sequence corresponding to amino acids 76-425 of human UBR7 (NP_786924.2).

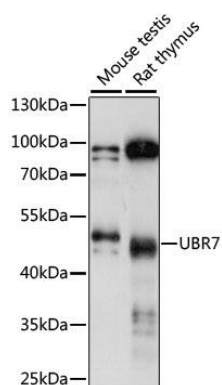
Storage:

Store at -20°C. Avoid freeze / thaw cycles. Buffer: PBS with 0.02% sodium azide, 50% glycerol, pH7.3.

Product Images



Western blot analysis of extracts of various cell lines, using UBR7 antibody (CAB15464) at 1:1000 dilution. Secondary antibody: HRP Goat Anti-Rabbit IgG (H+L) (CABS014) at 1:10000 dilution. Lysates/proteins: 25ug per lane. Blocking buffer: 3% nonfat dry milk in TBST. Detection: ECL Basic Kit (CABM00020). Exposure time: 5s.



Western blot analysis of extracts of various cell lines, using UBR7 antibody (CAB15464) at 1:1000 dilution. Secondary antibody: HRP Goat Anti-Rabbit IgG (H+L) (CABS014) at 1:10000 dilution. Lysates/proteins: 25ug per lane. Blocking buffer: 3% nonfat dry milk in TBST. Detection: ECL Basic Kit (CABM00020). Exposure time: 30s.