

# DRAM1 Rabbit Polyclonal Antibody



CAB15468

---

## Product Information

### Size:

20uL, 50uL, 100uL, 200uL

### Observed MW:

26kDa

### Calculated MW:

13kDa/26kDa

### Applications:

WB

### Reactivity:

Mouse

## Protein Background

This gene is regulated as part of the p53 tumor suppressor pathway. The gene encodes a lysosomal membrane protein that is required for the induction of autophagy by the pathway. Decreased transcriptional expression of this gene is associated with various tumors. This gene has a pseudogene on chromosome 4.

## Immunogen information

### Gene ID:

55332

### Uniprot

Q8N682

### Synonyms:

DRAM1; DRAM

## Antibody Information

### Recommended dilutions:

WB 1:200 - 1:2000

### Source:

Rabbit

### Isotype:

IgG

### Purification:

Affinity purification

### Immunogen:

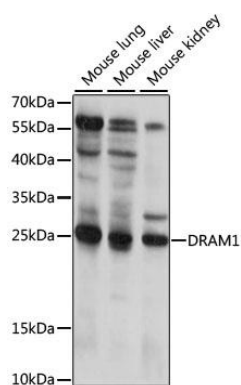
A synthetic peptide corresponding to a sequence within amino acids 100-200 of human DRAM1 (NP\_060840.2).

### Storage:

Store at -20°C. Avoid freeze / thaw cycles. Buffer: PBS with 0.02% sodium azide, 50% glycerol, pH7.3.

## Product Images

---



Western blot analysis of extracts of various cell lines, using DRAM1 antibody (CAB15468) at 1:1000 dilution. Secondary antibody: HRP Goat Anti-Rabbit IgG (H+L) (CABS014) at 1:10000 dilution. Lysates/proteins: 25ug per lane. Blocking buffer: 3% nonfat dry milk in TBST. Detection: ECL Basic Kit (CABM00020). Exposure time: 15s.