

# ZNF331 Rabbit Polyclonal Antibody



CAB15470

## Product Information

### Size:

20uL, 50uL, 100uL, 200uL

### Observed MW:

56kDa

### Calculated MW:

53kDa

### Applications:

WB

### Reactivity:

Mouse, Rat

## Protein Background

This gene encodes a zinc finger protein containing a KRAB (Kruppel-associated box) domain found in transcriptional repressors. This gene may be methylated and silenced in cancer cells. This gene is located within a differentially methylated region (DMR) and shows allele-specific expression in placenta. Alternative splicing and the use of alternative promoters results in multiple transcript variants encoding the same protein.

## Immunogen information

### Gene ID:

55422

### Uniprot

Q9NQX6

### Synonyms:

ZNF331; RITA; ZNF361; ZNF463

## Antibody Information

### Recommended dilutions:

WB 1:200 - 1:2000

### Source:

Rabbit

### Isotype:

IgG

### Purification:

Affinity purification

### Immunogen:

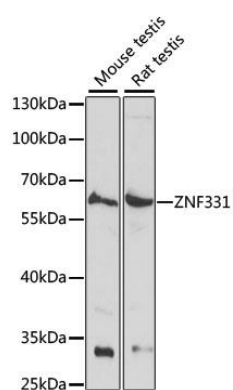
Recombinant fusion protein containing a sequence corresponding to amino acids 50-130 of human ZNF331 (NP\_061025.5).

### Storage:

Store at -20°C. Avoid freeze / thaw cycles. Buffer: PBS with 0.02% sodium azide, 50% glycerol, pH7.3.

## Product Images

---



Western blot analysis of extracts of various cell lines, using ZNF331 antibody (CAB15470) at 1:1000 dilution. Secondary antibody: HRP Goat Anti-Rabbit IgG (H+L) (CABS014) at 1:10000 dilution. Lysates/proteins: 25ug per lane. Blocking buffer: 3% nonfat dry milk in TBST. Detection: ECL Basic Kit (CABM00020). Exposure time: 10s.