

SMPD4 Rabbit Polyclonal Antibody



CAB15473

Product Information

Size:

20uL, 50uL, 100uL, 200uL

Observed MW:

100kDa

Calculated MW:

44kDa, 56-69kDa, 83-98kDa

Applications:

WB IF

Reactivity:

Human, Mouse,

Protein Background

The protein encoded by this gene is a sphingomyelinase that catalyzes the hydrolysis of membrane sphingomyelin to form phosphorylcholine and ceramide. This gene is activated by DNA damage, cellular stress, and tumor necrosis factor, but it is downregulated by wild-type p53. The encoded protein localizes to the endoplasmic reticulum and Golgi network.

Immunogen information

Gene ID:

55627

Uniprot

Q9NXE4

Synonyms:

SMPD4; NET13; NSMASE-3; NSMASE3

Antibody Information

Recommended dilutions:

WB 1:200 - 1:2000 IF 1:50 - 1:200

Source:

Rabbit

Isotype:

IgG

Purification:

Affinity purification

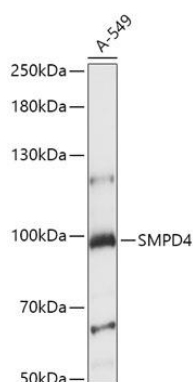
Immunogen:

Recombinant fusion protein containing a sequence corresponding to amino acids 600-800 of human SMPD4 (NP_060421.2).

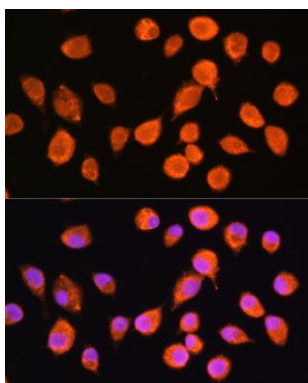
Storage:

Store at -20°C. Avoid freeze / thaw cycles. Buffer: PBS with 0.02% sodium azide, 50% glycerol, pH7.3.

Product Images



Western blot analysis of extracts of A-549 cells, using SMPD4 antibody (CAB15473) at 1:1000 dilution. Secondary antibody: HRP Goat Anti-Rabbit IgG (H+L) (CABS014) at 1:10000 dilution. Lysates/proteins: 25ug per lane. Blocking buffer: 3% nonfat dry milk in TBST. Detection: ECL Basic Kit (CABM00020). Exposure time: 15s.



Immunofluorescence analysis of L929 cells using SMPD4 Rabbit pAb (CAB15473) at dilution of 1:100. Blue: DAPI for nuclear staining.