

MFN1 Rabbit Polyclonal Antibody



CAB15474

Product Information

Size:

20uL, 50uL, 100uL, 200uL

Observed MW:

84kDa

Calculated MW:

83kDa

Applications:

WB IHC

Reactivity:

Human

Protein Background

The protein encoded by this gene is a mediator of mitochondrial fusion. This protein and mitofusin 2 are homologs of the Drosophila protein fuzzy onion (Fzo). They are mitochondrial membrane proteins that interact with each other to facilitate mitochondrial targeting.

Immunogen information

Gene ID:

67414

Uniprot

Synonyms:

MFN1; hfzo1; hfzo2

Antibody Information

Recommended dilutions:

WB 1:200 - 1:2000 IHC 1:50
- 1:200

Source:

Rabbit

Isotype:

IgG

Purification:

Affinity purification

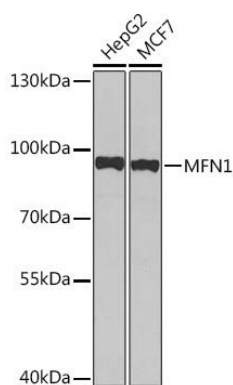
Immunogen:

A synthetic peptide corresponding to a sequence within amino acids 1-100 of mouse MFN1 (NP_077162.2).

Storage:

Store at -20°C. Avoid freeze / thaw cycles. Buffer: PBS with 0.02% sodium azide, 50% glycerol, pH7.3.

Product Images



Western blot analysis of extracts of various cell lines, using MFN1 Rabbit pAb (CAB15474) at 1:1000 dilution. Secondary antibody: HRP Goat Anti-Rabbit IgG (H+L) (CABS014) at 1:10000 dilution. Lysates/proteins: 25ug per lane. Blocking buffer: 3% nonfat dry milk in TBST. Detection: ECL Enhanced Kit (CABM00021). Exposure time: 15s.