

OGDHL Rabbit Polyclonal Antibody



CAB15475

Product Information

Size:

20uL, 50uL, 100uL, 200uL

Observed MW:

120kDa

Calculated MW:

91kDa/108kDa/114kDa

Applications:

WB IHC

Reactivity:

Human, Mouse, Rat

Protein Background

The protein encoded by this gene is similar to oxoglutarate dehydrogenase (OGDH) of the OGDH complex, which degrades glucose and glutamate. This gene encodes several isoforms, including some that appear to localize to mitochondria. The encoded protein down-regulates the AKT signaling cascade and can suppress the growth of cervical cancer cells.

Immunogen information

Gene ID:

55753

Uniprot

Q9ULDO

Synonyms:

OGDHL

Antibody Information

Recommended dilutions:

WB 1:200 - 1:2000 IHC 1:50
- 1:200

Source:

Rabbit

Isotype:

IgG

Purification:

Affinity purification

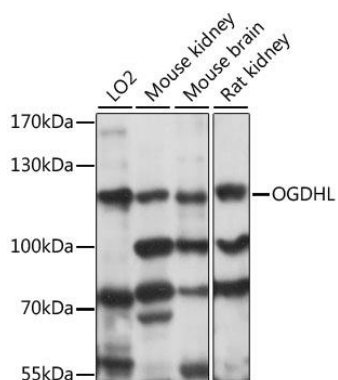
Immunogen:

Recombinant fusion protein containing a sequence corresponding to amino acids 1-110 of human OGDHL (NP_060715.2).

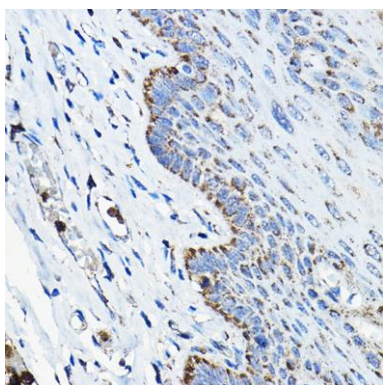
Storage:

Store at -20°C. Avoid freeze / thaw cycles. Buffer: PBS with 0.02% sodium azide, 50% glycerol, pH7.3.

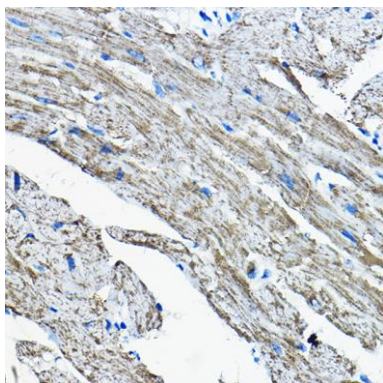
Product Images



Western blot analysis of extracts of various cell lines, using OGDHL antibody (CAB15475) at 1:1000 dilution. Secondary antibody: HRP Goat Anti-Rabbit IgG (H+L) (CABS014) at 1:10000 dilution. Lysates/proteins: 25ug per lane. Blocking buffer: 3% nonfat dry milk in TBST. Detection: ECL Basic Kit (CABM00020). Exposure time: 5s.



Immunohistochemistry of paraffin-embedded human esophageal using OGDHL Rabbit pAb (CAB15475) at dilution of 1:200 (40x lens).



Immunohistochemistry of paraffin-embedded mouse heart using OGDHL Rabbit pAb (CAB15475) at dilution of 1:200 (40x lens).