

LTB4R2 Rabbit Polyclonal Antibody



CAB15479

Product Information

Size:

20uL, 50uL, 100uL, 200uL

Observed MW:

43kDa

Calculated MW:

37kDa/41kDa

Applications:

WB

Reactivity:

Human, Mouse, Rat

Antibody Information

Recommended dilutions:

WB 1:200 - 1:2000

Source:

Rabbit

Isotype:

IgG

Purification:

Affinity purification

Protein Background

Immunogen information

Gene ID:

56413

Uniprot

Q9NPC1

Synonyms:

LTB4R2; BLT2; BLTR2; JULF2; KPG_004; LTB4-R 2; LTB4-R2; NOP9

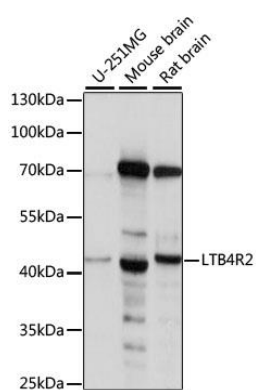
Immunogen:

Recombinant fusion protein containing a sequence corresponding to amino acids 254-358 of human LTB4R2 (NP_062813.2).

Storage:

Store at -20°C. Avoid freeze / thaw cycles. Buffer: PBS with 0.02% sodium azide, 50% glycerol, pH7.3.

Product Images



Western blot analysis of extracts of various cell lines, using LTB4R2 antibody (CAB15479). Secondary antibody: HRP Goat Anti-Rabbit IgG (H+L) (CABS014) at 1:10000 dilution. Lysates/proteins: 25ug per lane. Blocking buffer: 3% nonfat dry milk in TBST. Detection: ECL Basic Kit (CABM00020). Exposure time: 10s.