

RAB22A Rabbit Polyclonal Antibody



CAB15485

Product Information

Size:

20uL, 50uL, 100uL, 200uL

Observed MW:

22kDa

Calculated MW:

21kDa

Applications:

WB

Reactivity:

Mouse

Protein Background

The protein encoded by this gene is a member of the RAB family of small GTPases. The GTP-bound form of the encoded protein has been shown to interact with early-endosomal antigen 1, and may be involved in the trafficking of and interaction between endosomal compartments.

Immunogen information

Gene ID:

57403

Uniprot

Q9UL26

Synonyms:

RAB22A

Antibody Information

Recommended dilutions:

WB 1:200 - 1:2000

Source:

Rabbit

Isotype:

IgG

Purification:

Affinity purification

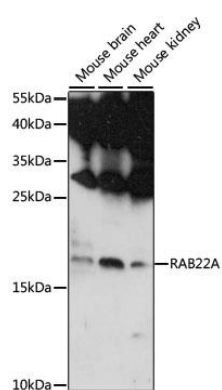
Immunogen:

A synthetic peptide corresponding to a sequence within amino acids 1-100 of human RAB22A (NP_065724.1).

Storage:

Store at -20°C. Avoid freeze / thaw cycles. Buffer: PBS with 0.02% sodium azide, 50% glycerol, pH7.3.

Product Images



Western blot analysis of extracts of various cell lines, using RAB22A antibody (CAB15485) at 1:1000 dilution. Secondary antibody: HRP Goat Anti-Rabbit IgG (H+L) (CABS014) at 1:10000 dilution. Lysates/proteins: 25ug per lane. Blocking buffer: 3% nonfat dry milk in TBST. Detection: ECL Basic Kit (CABM00020). Exposure time: 90s.