

# SLC12A5 Rabbit Polyclonal Antibody



CAB15486

## Product Information

### Size:

20uL, 50uL, 100uL, 200uL

### Observed MW:

110-260kDa

### Calculated MW:

123kDa/126kDa

### Applications:

WB

### Reactivity:

Human, Mouse, Rat

## Protein Background

K-Cl cotransporters are proteins that lower intracellular chloride concentrations below the electrochemical equilibrium potential. The protein encoded by this gene is an integral membrane K-Cl cotransporter that can function in either a net efflux or influx pathway, depending on the chemical concentration gradients of potassium and chloride. The encoded protein can act as a homomultimer, or as a heteromultimer with other K-Cl cotransporters, to maintain chloride homeostasis in neurons. Alternative splicing results in two transcript variants encoding different isoforms.

## Immunogen information

### Gene ID:

57468

### Uniprot

Q9H2X9

### Synonyms:

SLC12A5; EIEE34; EIG14; KCC2; hKCC2

## Antibody Information

### Recommended dilutions:

WB 1:200 - 1:2000

### Source:

Rabbit

### Isotype:

IgG

### Purification:

Affinity purification

### Immunogen:

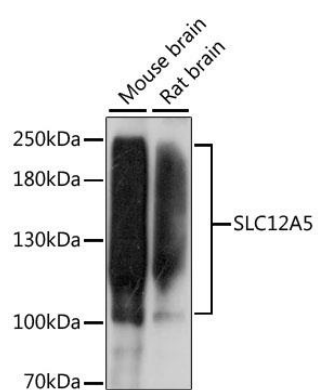
Recombinant fusion protein containing a sequence corresponding to amino acids 945-1025 of human SLC12A5 (NP\_001128243.1).

### Storage:

Store at -20°C. Avoid freeze / thaw cycles. Buffer: PBS with 0.02% sodium azide, 50% glycerol, pH7.3.

## Product Images

---



Western blot analysis of extracts of various cell lines, using SLC12A5 antibody (CAB15486) at 1:1000 dilution. Secondary antibody: HRP Goat Anti-Rabbit IgG (H+L) (CABS014) at 1:10000 dilution. Lysates/proteins: 25ug per lane. Blocking buffer: 3% nonfat dry milk in TBST. Detection: ECL Basic Kit (CABM00020). Exposure time: 60s.