

ARID1B Rabbit Polyclonal Antibody



CAB15488

Product Information

Size:

20uL, 50uL, 100uL, 200uL

Observed MW:

Refer to figures

Calculated MW:

162kDa/236kDa/237kDa/241kDa

Applications:

WB IHC IF

Reactivity:

Human, Mouse, Rat

Antibody Information

Recommended dilutions:

WB 1:200 - 1:2000 IHC 1:50
- 1:200 IF 1:50 - 1:200

Source:

Rabbit

Isotype:

IgG

Purification:

Affinity purification

Protein Background

This locus encodes an AT-rich DNA interacting domain-containing protein. The encoded protein is a component of the SWI/SNF chromatin remodeling complex and may play a role in cell-cycle activation. The protein encoded by this locus is similar to AT-rich interactive domain-containing protein 1A. These two proteins function as alternative, mutually exclusive ARID-subunits of the SWI/SNF complex. The associated complexes play opposing roles. Alternative splicing results in multiple transcript variants.

Immunogen information

Gene ID:

57492

Uniprot

Q8NFD5

Synonyms:

ARID1B; 6A3-5; BAF250B; BRIGHT; CSS1; DAN15; ELD/OSA1; MRD12; OSA2; P250R

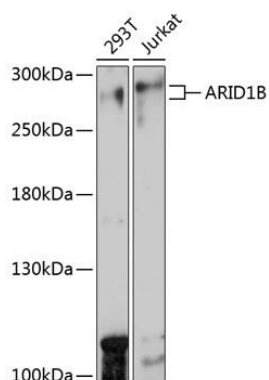
Immunogen:

Recombinant fusion protein containing a sequence corresponding to amino acids 400-650 of human ARID1B (NP_059989.2).

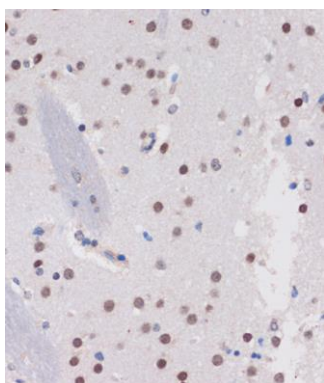
Storage:

Store at -20°C. Avoid freeze / thaw cycles. Buffer: PBS with 0.02% sodium azide, 50% glycerol, pH7.3.

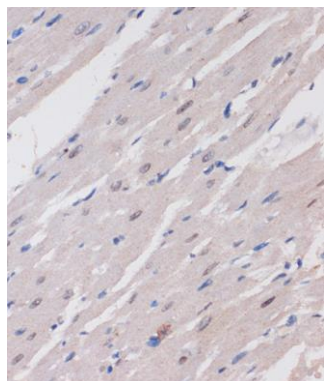
Product Images



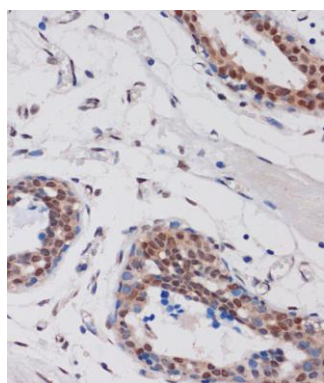
Western blot analysis of extracts of various cell lines, using ARID1B antibody (CAB15488) at 1:1000 dilution. Secondary antibody: HRP Goat Anti-Rabbit IgG (H+L) (CABS014) at 1:10000 dilution. Lysates/proteins: 25ug per lane. Blocking buffer: 3% nonfat dry milk in TBST. Detection: ECL Basic Kit (CABM00020). Exposure time: 30s.



Immunohistochemistry of paraffin-embedded Mouse brain using ARID1B Rabbit pAb (CAB15488) at dilution of 1:100 (40x lens).



Immunohistochemistry of paraffin-embedded Rat heart using ARID1B Rabbit pAb (CAB15488) at dilution of 1:100 (40x lens).



Immunohistochemistry of paraffin-embedded Human breast using ARID1B Rabbit pAb (CAB15488) at dilution of 1:100 (40x lens).