

# RAPH1 Rabbit Polyclonal Antibody



CAB15506

---

## Product Information

### Size:

20uL, 50uL, 100uL, 200uL

### Observed MW:

200kDa

### Calculated MW:

66kDa/67kDa/69kDa/70kDa/  
72kDa/73kDa/135kDa

### Applications:

WB IF

### Reactivity:

Human, Mouse, Rat

## Antibody Information

### Recommended dilutions:

WB 1:200 - 1:2000 IF 1:50 -  
1:200

### Source:

Rabbit

### Isotype:

IgG

### Purification:

Affinity purification

## Protein Background

This gene encodes a protein that belongs to the Mig10/Rap1-interacting adaptor molecule/Lamellipodin family of adapter proteins, which function in cell migration. Members of this family contain pleckstrin-homology domains, Ras-association domains, and proline-rich C-termini. The protein encoded by this gene regulates actin dynamics through interaction with Ena/Vasodilator proteins as well as direct binding to filamentous actin to regulate actin network assembly. Alternative splicing results in multiple transcript variants.

## Immunogen information

### Gene ID:

65059

### Uniprot

Q70E73

### Synonyms:

RAPH1; ALS2CR18; ALS2CR9; LPD; PREL-2; PREL2; RMO1;  
RaIGDS/AF-6

### Immunogen:

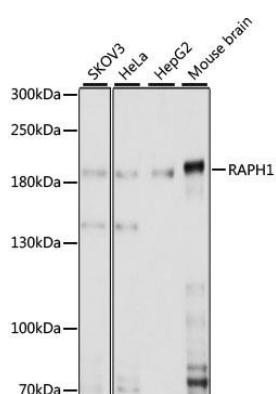
Recombinant fusion protein containing a sequence corresponding to amino acids 1-240 of human RAPH1 (NP\_998754.1).

### Storage:

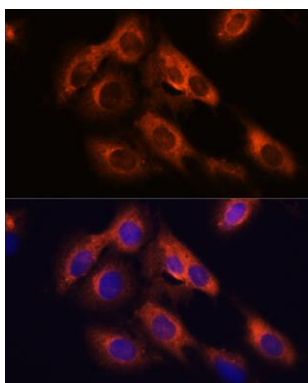
Store at -20°C. Avoid freeze / thaw cycles. Buffer: PBS with 0.02% sodium azide, 50% glycerol, pH7.3.

## Product Images

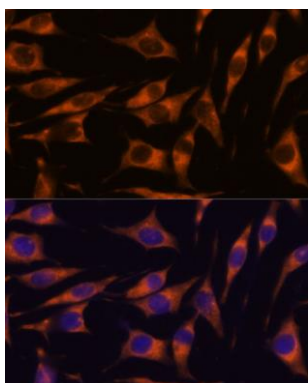
---



Western blot analysis of extracts of various cell lines, using RAPH1 antibody (CAB15506) at 1:1000 dilution. Secondary antibody: HRP Goat Anti-Rabbit IgG (H+L) (CABS014) at 1:10000 dilution. Lysates/proteins: 25ug per lane. Blocking buffer: 3% nonfat dry milk in TBST. Detection: ECL Basic Kit (CABM00020). Exposure time: 30s.



Immunofluorescence analysis of C6 cells using RAPH1 antibody (CAB15506) at dilution of 1:100. Blue: DAPI for nuclear staining.



Immunofluorescence analysis of L929 cells using RAPH1 antibody (CAB15506) at dilution of 1:100. Blue: DAPI for nuclear staining.