

# WNK3 Rabbit Polyclonal Antibody



CAB15507

## Product Information

### Size:

20uL, 50uL, 100uL, 200uL

### Observed MW:

198kDa

### Calculated MW:

191kDa/192kDa/197kDa/198kDa

### Applications:

WB

### Reactivity:

Mouse

## Protein Background

This gene encodes a protein belonging to the 'with no lysine' family of serine-threonine protein kinases. These family members lack the catalytic lysine in subdomain II, and instead have a conserved lysine in subdomain I. This family member functions as a positive regulator of the transcellular Ca<sup>2+</sup> transport pathway, and it plays a role in the increase of cell survival in a caspase-3-dependent pathway. Alternative splicing results in multiple transcript variants.

## Immunogen information

### Gene ID:

65267

### Uniprot

Q9BYP7

### Synonyms:

WNK3; PRKWNK3

## Antibody Information

### Recommended dilutions:

WB 1:200 - 1:2000

### Source:

Rabbit

### Isotype:

IgG

### Purification:

Affinity purification

### Immunogen:

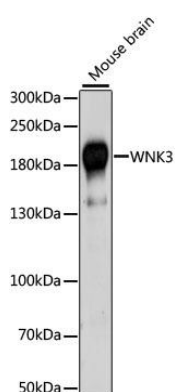
Recombinant fusion protein containing a sequence corresponding to amino acids 500-600 of human WNK3 (NP\_065973.2).

### Storage:

Store at -20°C. Avoid freeze / thaw cycles. Buffer: PBS with 0.02% sodium azide, 50% glycerol, pH7.3.

## Product Images

---



Western blot analysis of extracts of mouse brain, using WNK3 antibody (CAB15507) at 1:1000 dilution. Secondary antibody: HRP Goat Anti-Rabbit IgG (H+L) (CABS014) at 1:10000 dilution. Lysates/proteins: 25ug per lane. Blocking buffer: 3% nonfat dry milk in TBST. Detection: ECL Basic Kit (CABM00020). Exposure time: 60s.