

VMP1 Rabbit Polyclonal Antibody



CAB15523

Product Information

Size:

20uL, 50uL, 100uL, 200uL

Observed MW:

42kDa

Calculated MW:

24kDa/46kDa

Applications:

WB IF

Reactivity:

Human, Mouse, Rat

Antibody Information

Recommended dilutions:

WB 1:200 - 1:2000 IF 1:50 - 1:200

Source:

Rabbit

Isotype:

IgG

Purification:

Affinity purification

Protein Background

Immunogen information

Gene ID:

81671

Uniprot

Q96GC9

Synonyms:

VMP1; EPG3; TANGO5; TMEM49

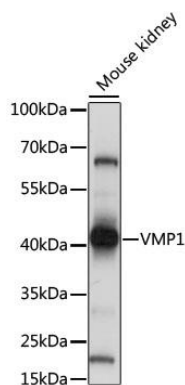
Immunogen:

A synthetic peptide corresponding to a sequence within amino acids 300 to the C-terminus of human VMP1 (NP_112200.2).

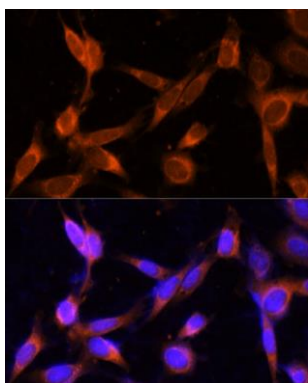
Storage:

Store at -20°C. Avoid freeze / thaw cycles. Buffer: PBS with 0.02% sodium azide, 50% glycerol, pH7.3.

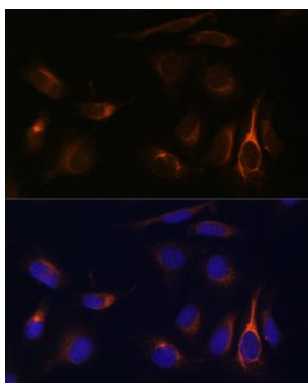
Product Images



Western blot analysis of extracts of mouse kidney, using VMP1 antibody (CAB15523) at 1:1000 dilution. Secondary antibody: HRP Goat Anti-Rabbit IgG (H+L) (CABS014) at 1:10000 dilution. Lysates/proteins: 25ug per lane. Blocking buffer: 3% nonfat dry milk in TBST. Detection: ECL Basic Kit (CABM00020). Exposure time: 5s.



Immunofluorescence analysis of NIH-3T3 cells using VMP1 Polyclonal Antibody (CAB15523) at dilution of 1:100 (40x lens). Blue: DAPI for nuclear staining.



Immunofluorescence analysis of U-2 OS cells using VMP1 Polyclonal Antibody (CAB15523) at dilution of 1:100 (40x lens). Blue: DAPI for nuclear staining.