

# NICN1 Rabbit Polyclonal Antibody



CAB15532

---

## Product Information

### Size:

20uL, 50uL, 100uL, 200uL

### Observed MW:

18kDa

### Calculated MW:

19kDa/24kDa

### Applications:

WB

### Reactivity:

Mouse, Rat

## Antibody Information

### Recommended dilutions:

WB 1:200 - 1:2000

### Source:

Rabbit

### Isotype:

IgG

### Purification:

Affinity purification

## Protein Background

This protein encoded by this gene localizes to the nucleus and is expressed in numerous tissues including brain, testis, liver, and kidney. This refseq contains genomic sequence in its 3' UTR which is not supported by experimental evidence. Computer predictions indicate that this region of the 3' UTR contains hairpin-forming self-complementary sequence which is possibly excised after transcription. This gene has a pseudogene on chromosome X.

## Immunogen information

### Gene ID:

84276

### Uniprot

Q9BSH3

### Synonyms:

NICN1; nicolin-1

### Immunogen:

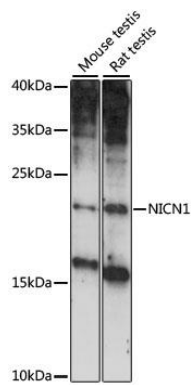
Recombinant fusion protein containing a sequence corresponding to amino acids 1-213 of human NICN1 (NP\_115692.1).

### Storage:

Store at -20°C. Avoid freeze / thaw cycles. Buffer: PBS with 0.02% sodium azide, 50% glycerol, pH7.3.

## Product Images

---



Western blot analysis of extracts of various cell lines, using NICN1 antibody (CAB15532) at 1:1000 dilution. Secondary antibody: HRP Goat Anti-Rabbit IgG (H+L) (CABS014) at 1:10000 dilution. Lysates/proteins: 25ug per lane. Blocking buffer: 3% nonfat dry milk in TBST. Detection: ECL Basic Kit (CABM00020). Exposure time: 90s.