

MIEN1 Rabbit Polyclonal Antibody



CAB15535

Product Information

Size:

20uL, 50uL, 100uL, 200uL

Observed MW:

15kDa

Calculated MW:

12kDa

Applications:

WB

Reactivity:

Human

Antibody Information

Recommended dilutions:

WB 1:200 - 1:2000

Source:

Rabbit

Isotype:

IgG

Purification:

Affinity purification

Protein Background

Immunogen information

Gene ID:

84299

Uniprot

Q9BRT3

Synonyms:

MIEN1; C17orf37; C35; ORB3; RDX12; XTP4

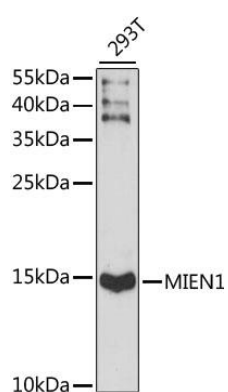
Immunogen:

Recombinant fusion protein containing a sequence corresponding to amino acids 1-115 of human MIEN1 (NP_115715.3).

Storage:

Store at -20°C. Avoid freeze / thaw cycles. Buffer: PBS with 0.02% sodium azide, 50% glycerol, pH7.3.

Product Images



Western blot analysis of extracts of 293T cells, using MIEN1 antibody (CAB15535) at 1:1000 dilution. Secondary antibody: HRP Goat Anti-Rabbit IgG (H+L) (CABS014) at 1:10000 dilution. Lysates/proteins: 25ug per lane. Blocking buffer: 3% nonfat dry milk in TBST. Detection: ECL Basic Kit (CABM00020). Exposure time: 90s.