

RELT Rabbit Polyclonal Antibody



CAB15540

Product Information

Size:

20uL, 50uL, 100uL, 200uL

Observed MW:

47kDa

Calculated MW:

46kDa

Applications:

WB

Reactivity:

Human, Mouse, Rat

Protein Background

The protein encoded by this gene is a member of the TNF-receptor superfamily. This receptor is especially abundant in hematologic tissues. It has been shown to activate the NF-kappaB pathway and selectively bind TNF receptor-associated factor 1 (TRAF1). This receptor is capable of stimulating T-cell proliferation in the presence of CD3 signaling, which suggests its regulatory role in immune response. Two alternatively spliced transcript variants of this gene encoding the same protein have been reported.

Immunogen information

Gene ID:

84957

Uniprot

Q969Z4

Synonyms:

RELT; TNFRSF19L; TRLT

Antibody Information

Recommended dilutions:

WB 1:200 - 1:2000

Source:

Rabbit

Isotype:

IgG

Purification:

Affinity purification

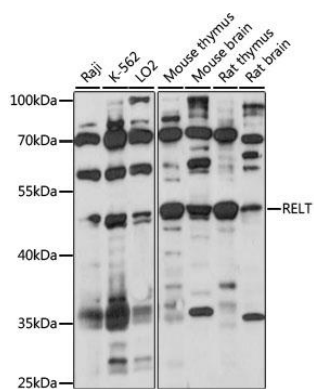
Immunogen:

Recombinant fusion protein containing a sequence corresponding to amino acids 26-162 of human RELT (NP_116260.2).

Storage:

Store at -20°C. Avoid freeze / thaw cycles. Buffer: PBS with 0.02% sodium azide, 50% glycerol, pH7.3.

Product Images



Western blot analysis of extracts of various cell lines, using RELT antibody (CAB15540) at 1:1000 dilution. Secondary antibody: HRP Goat Anti-Rabbit IgG (H+L) (CABS014) at 1:10000 dilution. Lysates/proteins: 25ug per lane. Blocking buffer: 3% nonfat dry milk in TBST. Detection: ECL Basic Kit (CABM00020). Exposure time: 60S.