

MICALL1 Rabbit Polyclonal Antibody



CAB15541

Product Information

Size:

20uL, 50uL, 100uL, 200uL

Observed MW:

95kDa

Calculated MW:

93kDa

Applications:

WB

Reactivity:

Mouse

Antibody Information

Recommended dilutions:

WB 1:200 - 1:2000

Source:

Rabbit

Isotype:

IgG

Purification:

Affinity purification

Protein Background

Immunogen information

Gene ID:

85377

Uniprot

Q8N3F8

Synonyms:

MICALL1; MICAL-L1; MIRAB13

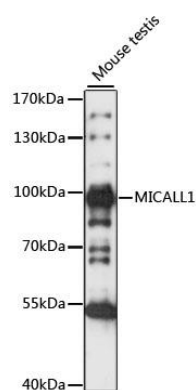
Immunogen:

Recombinant fusion protein containing a sequence corresponding to amino acids 614-863 of human MICALL1 (NP_203744.1).

Storage:

Store at -20°C. Avoid freeze / thaw cycles. Buffer: PBS with 0.02% sodium azide, 50% glycerol, pH7.3.

Product Images



Western blot analysis of extracts of Mouse testis, using MICALL1 antibody (CAB15541) at 1:1000 dilution. Secondary antibody: HRP Goat Anti-Rabbit IgG (H+L) (CABS014) at 1:10000 dilution. Lysates/proteins: 25ug per lane. Blocking buffer: 3% nonfat dry milk in TBST. Detection: ECL Basic Kit (CABM00020). Exposure time: 30S.