

FCHSD1 Rabbit Polyclonal Antibody



CAB15543

Product Information

Size:

20uL, 50uL, 100uL, 200uL

Observed MW:

75kDa

Calculated MW:

40kDa/46kDa/76kDa

Applications:

WB IHC

Reactivity:

Human, Mouse, Rat

Antibody Information

Recommended dilutions:

WB 1:200 - 1:2000 IHC 1:50
- 1:200

Source:

Rabbit

Isotype:

IgG

Purification:

Affinity purification

Protein Background

Immunogen information

Gene ID:

89848

Uniprot

Q86WN1

Synonyms:

FCHSD1; NWK2

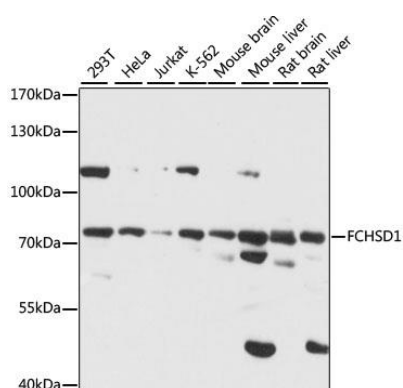
Immunogen:

Recombinant fusion protein containing a sequence corresponding to amino acids 100-400 of human FCHSD1 (NP_258260.1).

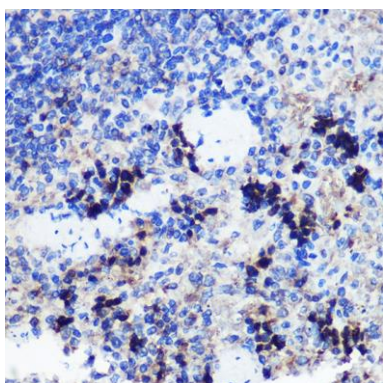
Storage:

Store at -20°C. Avoid freeze / thaw cycles. Buffer: PBS with 0.02% sodium azide, 50% glycerol, pH7.3.

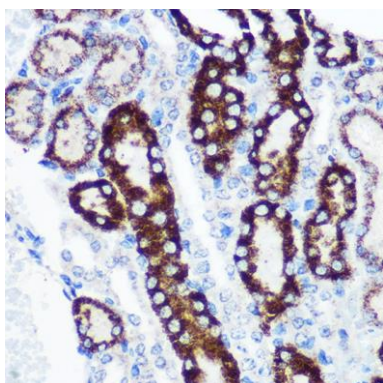
Product Images



Western blot analysis of extracts of various cell lines, using FCHSD1 antibody (CAB15543) at 1:1000 dilution. Secondary antibody: HRP Goat Anti-Rabbit IgG (H+L) (CABS014) at 1:10000 dilution. Lysates/proteins: 25ug per lane. Blocking buffer: 3% nonfat dry milk in TBST. Detection: ECL Basic Kit (CABM00020). Exposure time: 15S.



Immunohistochemistry of paraffin-embedded Rat spleen using FCHSD1 Rabbit pAb (CAB15543) at dilution of 1:100 (40x lens).



Immunohistochemistry of paraffin-embedded Mouse kidney using FCHSD1 Rabbit pAb (CAB15543) at dilution of 1:100 (40x lens).