

# TPD52L3 Rabbit Polyclonal Antibody



CAB15545

---

## Product Information

### Size:

20uL, 50uL, 100uL, 200uL

### Observed MW:

14kDa

### Calculated MW:

14kDa/15kDa

### Applications:

WB IF

### Reactivity:

Mouse, Rat

## Protein Background

This gene encodes a member of the tumor protein D52-like family of proteins. These proteins are characterized by an N-terminal coiled-coil motif that is used to form homo- and heteromeric complexes with other tumor protein D52-like proteins. The encoded protein may play a role in spermatogenesis. Alternative splicing results in multiple transcript variants.

## Immunogen information

### Gene ID:

89882

### Uniprot

Q96J77

### Synonyms:

TPD52L3; NYDSP25; hD55

## Antibody Information

### Recommended dilutions:

WB 1:200 - 1:2000 IF 1:50 - 1:200

### Source:

Rabbit

### Isotype:

IgG

### Purification:

Affinity purification

### Immunogen:

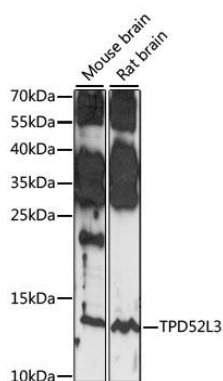
Recombinant fusion protein containing a sequence corresponding to amino acids 1-132 of human TPD52L3 (NP\_001001875.1).

### Storage:

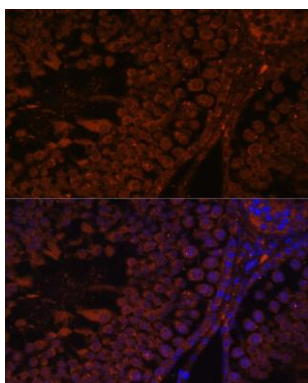
Store at -20°C. Avoid freeze / thaw cycles. Buffer: PBS with 0.02% sodium azide, 50% glycerol, pH7.3.

## Product Images

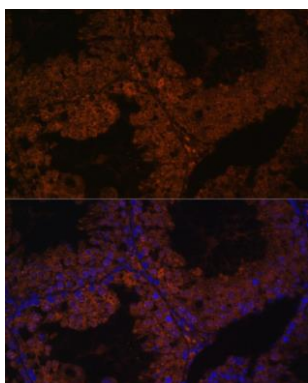
---



Western blot analysis of extracts of various cell lines, using TPD52L3 antibody (CAB15545) at 1:1000 dilution. Secondary antibody: HRP Goat Anti-Rabbit IgG (H+L) (CABS014) at 1:10000 dilution. Lysates/proteins: 25ug per lane. Blocking buffer: 3% nonfat dry milk in TBST. Detection: ECL Basic Kit (CABM00020). Exposure time: 30S.



Immunofluorescence analysis of rat testis using TPD52L3 antibody (CAB15545) at dilution of 1:100. Blue: DAPI for nuclear staining.



Immunofluorescence analysis of mouse testis using TPD52L3 antibody (CAB15545) at dilution of 1:100. Blue: DAPI for nuclear staining.