

# TMEM67 Rabbit Polyclonal Antibody



CAB15549

---

## Product Information

### Size:

20uL, 50uL, 100uL, 200uL

### Observed MW:

115kDa

### Calculated MW:

103kDa/111kDa

### Applications:

WB

### Reactivity:

Mouse, Rat

## Protein Background

The protein encoded by this gene localizes to the primary cilium and to the plasma membrane. The gene functions in centriole migration to the apical membrane and formation of the primary cilium. Multiple transcript variants encoding different isoforms have been found for this gene. Defects in this gene are a cause of Meckel syndrome type 3 (MKS3) and Joubert syndrome type 6 (JBTS6).

## Immunogen information

### Gene ID:

91147

### Uniprot

Q5HYA8

### Synonyms:

TMEM67; JBTS6; MECKELIN; MKS3; NPHP11; TNEM67; meckelin

## Antibody Information

### Recommended dilutions:

WB 1:200 - 1:2000

### Source:

Rabbit

### Isotype:

IgG

### Purification:

Affinity purification

### Immunogen:

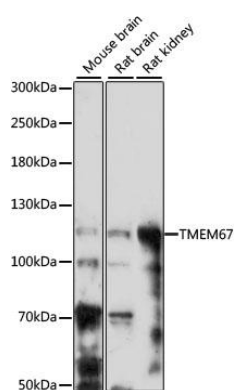
Recombinant fusion protein containing a sequence corresponding to amino acids 780-940 of human TMEM67 (NP\_714915.3).

### Storage:

Store at -20°C. Avoid freeze / thaw cycles. Buffer: PBS with 0.02% sodium azide, 50% glycerol, pH7.3.

## Product Images

---



Western blot analysis of extracts of various cell lines, using TMEM67 antibody (CAB15549) at 1:1000 dilution. Secondary antibody: HRP Goat Anti-Rabbit IgG (H+L) (CABS014) at 1:10000 dilution. Lysates/proteins: 25ug per lane. Blocking buffer: 3% nonfat dry milk in TBST. Detection: ECL Basic Kit (CABM00020). Exposure time: 3min.