

Caveolin-1 Rabbit Polyclonal Antibody



CAB1555

Product Information

Size:

20uL, 50uL, 100uL, 200uL

Observed MW:

20kDa/23kDa

Calculated MW:

17kDa/20kDa

Applications:

WB IHC IF

Reactivity:

Human, Mouse, Rat

Antibody Information

Recommended dilutions:

WB 1:500 - 1:2000 IHC 1:50
- 1:200 IF 1:50 - 1:200

Source:

Rabbit

Isotype:

IgG

Purification:

Affinity purification

Protein Background

The scaffolding protein encoded by this gene is the main component of the caveolae plasma membranes found in most cell types. The protein links integrin subunits to the tyrosine kinase FYN, an initiating step in coupling integrins to the Ras-ERK pathway and promoting cell cycle progression. The gene is a tumor suppressor gene candidate and a negative regulator of the Ras-p42/44 mitogen-activated kinase cascade. Caveolin 1 and caveolin 2 are located next to each other on chromosome 7 and express colocalizing proteins that form a stable hetero-oligomeric complex. Mutations in this gene have been associated with Berardinelli-Seip congenital lipodystrophy. Alternatively spliced transcripts encode alpha and beta isoforms of caveolin 1.

Immunogen information

Gene ID:

857

Uniprot

Q03135

Synonyms:

BSCL3; CGL3; LCCNS; MSTP085; PPH3; VIP21; CAV1

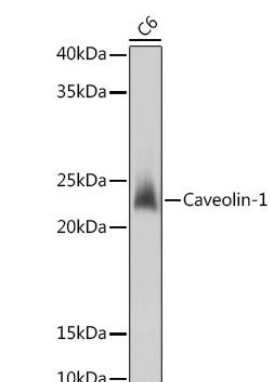
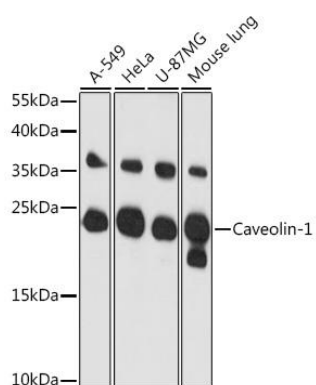
Immunogen:

Recombinant fusion protein containing a sequence corresponding to amino acids 1-100 of human Caveolin-1 (NP_001744.2).

Storage:

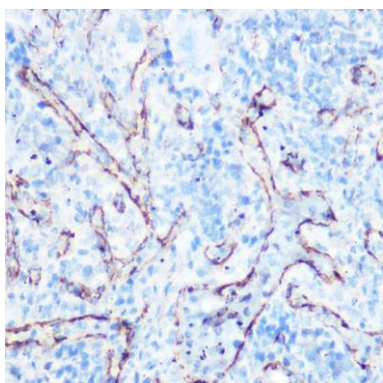
Store at -20°C. Avoid freeze / thaw cycles. Buffer: PBS with 0.02% sodium azide, 50% glycerol, pH7.3.

Product Images

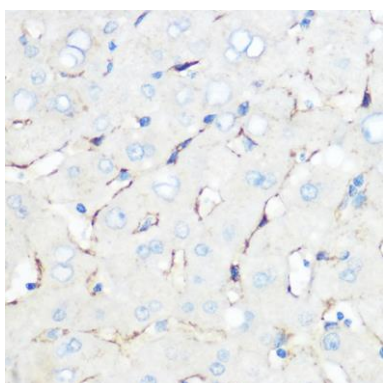


Western blot analysis of extracts of various cell lines, using Caveolin-1 antibody (CAB1555) at 1:3000 dilution. Secondary antibody: HRP Goat Anti-Rabbit IgG (H+L) (CABS014) at 1:10000 dilution. Lysates/proteins: 25ug per lane. Blocking buffer: 3% nonfat dry milk in TBST. Detection: ECL Basic Kit (CABM00020). Exposure time: 10s.

Western blot analysis of extracts of C6 cells, using Caveolin-1 antibody (CAB1555) at 1:1000 dilution. Secondary antibody: HRP Goat Anti-Rabbit IgG (H+L) (CABS014) at 1:10000 dilution. Lysates/proteins: 25ug per lane. Blocking buffer: 3% nonfat dry milk in TBST. Detection: ECL Basic Kit (CABM00020). Exposure time: 10s.



Immunohistochemistry of paraffin-embedded rat spleen using Caveolin-1 Rabbit pAb (CAB1555) at dilution of 1:100 (40x lens).



Immunohistochemistry of paraffin-embedded human liver using Caveolin-1 Rabbit pAb (CAB1555) at dilution of 1:100 (40x lens).