

TOP1MT Rabbit Polyclonal Antibody



CAB15559

Product Information

Size:

20uL, 50uL, 100uL, 200uL

Observed MW:

70kDa

Calculated MW:

58kDa/69kDa

Applications:

WB IHC

Reactivity:

Human, Rat

Protein Background

This gene encodes a mitochondrial DNA topoisomerase that plays a role in the modification of DNA topology. The encoded protein is a type IB topoisomerase and catalyzes the transient breaking and rejoining of DNA to relieve tension and DNA supercoiling generated in the mitochondrial genome during replication and transcription. Alternatively spliced transcript variants encoding multiple isoforms have been observed for this gene.

Immunogen information

Gene ID:

116447

Uniprot

Q969P6

Synonyms:

TOP1MT

Antibody Information

Recommended dilutions:

WB 1:200 - 1:2000 IHC 1:50 - 1:200

Source:

Rabbit

Isotype:

IgG

Purification:

Affinity purification

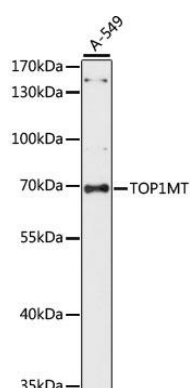
Immunogen:

Recombinant fusion protein containing a sequence corresponding to amino acids 470-550 of human TOP1MT (NP_443195.1).

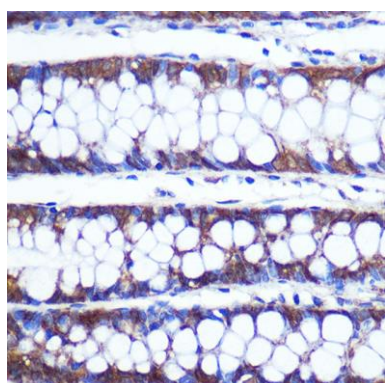
Storage:

Store at -20°C. Avoid freeze / thaw cycles. Buffer: PBS with 0.02% sodium azide, 50% glycerol, pH7.3.

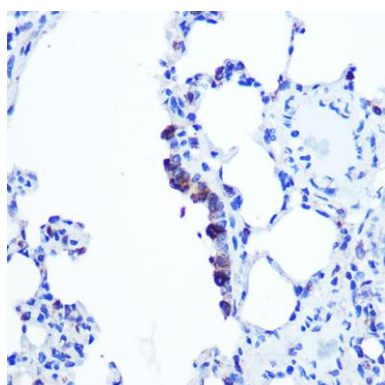
Product Images



Western blot analysis of extracts of A-549 cells, using TOP1MT antibody (CAB15559) at 1:1000 dilution. Secondary antibody: HRP Goat Anti-Rabbit IgG (H+L) (CABS014) at 1:10000 dilution. Lysates/proteins: 25ug per lane. Blocking buffer: 3% nonfat dry milk in TBST. Detection: ECL Basic Kit (CABM00020). Exposure time: 60S.



Immunohistochemistry of paraffin-embedded Human colon using TOP1MT Rabbit pAb (CAB15559) at dilution of 1:100 (40x lens).



Immunohistochemistry of paraffin-embedded Rat lung using TOP1MT Rabbit pAb (CAB15559) at dilution of 1:100 (40x lens).