

# DRD3 Rabbit Polyclonal Antibody



CAB1556

## Product Information

### Size:

20uL, 50uL, 100uL, 200uL

### Observed MW:

44kDa

### Calculated MW:

40kDa/44kDa

### Applications:

WB IHC IF

### Reactivity:

Human, Mouse, Rat

## Protein Background

This gene encodes the D3 subtype of the five (D1-D5) dopamine receptors. The activity of the D3 subtype receptor is mediated by G proteins which inhibit adenylyl cyclase. This receptor is localized to the limbic areas of the brain, which are associated with cognitive, emotional, and endocrine functions. Genetic variation in this gene may be associated with susceptibility to hereditary essential tremor 1. Alternative splicing of this gene results in transcript variants encoding different isoforms, although some variants may be subject to nonsense-mediated decay (NMD).

## Immunogen information

### Gene ID:

1814

### Uniprot

P35462

### Synonyms:

DRD3; D3DR; ETM1; FET1

## Antibody Information

### Recommended dilutions:

WB 1:500 - 1:2000 IHC 1:50  
- 1:200 IF 1:50 - 1:200

### Source:

Rabbit

### Isotype:

IgG

### Purification:

Affinity purification

### Immunogen:

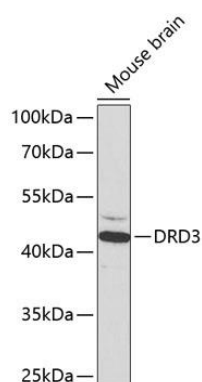
Recombinant fusion protein containing a sequence corresponding to amino acids 213-329 of human DRD3 (NP\_000787.2).

### Storage:

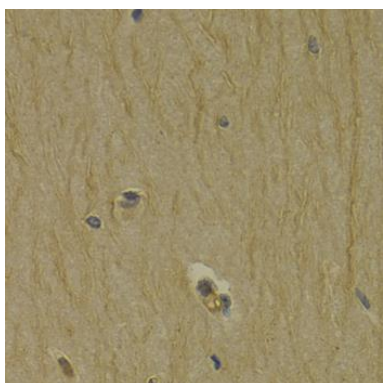
Store at -20°C. Avoid freeze / thaw cycles. Buffer: PBS with 0.02% sodium azide, 50% glycerol, pH7.3.

## Product Images

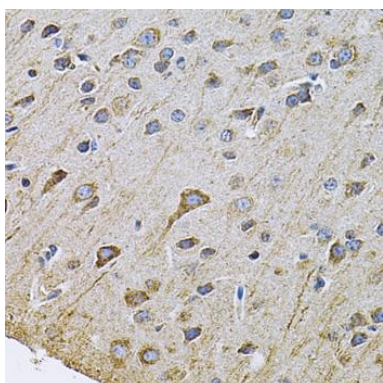
---



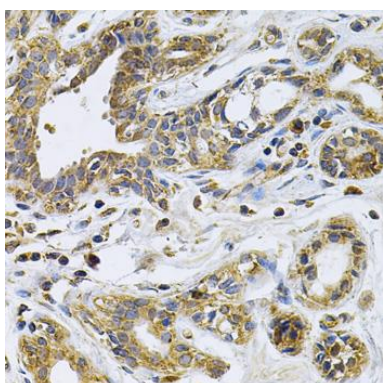
Western blot analysis of extracts of mouse brain, using DRD3 antibody (CAB1556) at 1:1000 dilution. Secondary antibody: HRP Goat Anti-Rabbit IgG (H+L) (CABS014) at 1:10000 dilution. Lysates/proteins: 25ug per lane. Blocking buffer: 3% nonfat dry milk in TBST.



Immunohistochemistry of paraffin-embedded rat brain using DRD3 Antibody (CAB1556) at dilution of 1:200 (40x lens).



Immunohistochemistry of paraffin-embedded rat brain using DRD3 Antibody (CAB1556) at dilution of 1:100 (40x lens).



Immunohistochemistry of paraffin-embedded human breast cancer using DRD3 Antibody (CAB1556) at dilution of 1:100 (40x lens).