

ADGRA3 Rabbit Polyclonal Antibody



CAB15573

Product Information

Size:

20uL, 50uL, 100uL, 200uL

Observed MW:

146kDa

Calculated MW:

42kDa/68kDa/131kDa/146kDa

Applications:

WB

Reactivity:

Mouse, Rat

Antibody Information

Recommended dilutions:

WB 1:200 - 1:2000

Source:

Rabbit

Isotype:

IgG

Purification:

Affinity purification

Protein Background

This gene encodes a member of the G protein-coupled receptor superfamily. This membrane protein may play a role in tumor angiogenesis through its interaction with the human homolog of the Drosophila disc large tumor suppressor gene. This gene is mapped to a candidate region of chromosome 4 which may be associated with bipolar disorder and schizophrenia.

Immunogen information

Gene ID:

166647

Uniprot

Q8IWK6

Synonyms:

ADGRA3; GPR125; PGR21; TEM5L

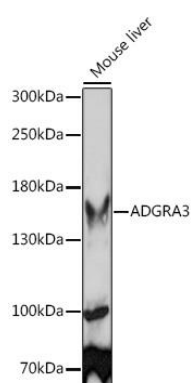
Immunogen:

Recombinant fusion protein containing a sequence corresponding to amino acids 370-600 of human ADGRA3 (NP_660333.2).

Storage:

Store at -20°C. Avoid freeze / thaw cycles. Buffer: PBS with 0.02% sodium azide, 50% glycerol, pH7.3.

Product Images



Western blot analysis of extracts of Mouse liver, using ADGRA3 Rabbit pAb (CAB15573) at 1:1000 dilution. Secondary antibody: HRP Goat Anti-Rabbit IgG (H+L) (CABS014) at 1:10000 dilution. Lysates/proteins: 25ug per lane. Blocking buffer: 3% nonfat dry milk in TBST. Detection: ECL Basic Kit (CABM00020). Exposure time: 3min.