

LC3A / LC3B Rabbit Polyclonal Antibody



CAB15591

Product Information

Size:

20uL, 50uL, 100uL, 200uL

Observed MW:

14kDa, 16kDa

Calculated MW:

14kDa

Applications:

WB IHC IF

Reactivity:

Human, Mouse

Antibody Information

Recommended dilutions:

WB 1:500 - 1:2000 IHC 1:50
- 1:200 IF 1:50 - 1:200

Source:

Rabbit

Isotype:

IgG

Purification:

Affinity purification

Protein Background

The product of this gene is a subunit of neuronal microtubule-associated MAP1A and MAP1B proteins, which are involved in microtubule assembly and important for neurogenesis. Studies on the rat homolog implicate a role for this gene in autophagy, a process that involves the bulk degradation of cytoplasmic component.

Immunogen information

Gene ID:

84557/81631

Uniprot

Q9GZQ8/Q9H492

Synonyms:

MAP1LC3B; ATG8F; LC3B; MAP1A/1BLC3; MAP1LC3B-a;
MAP1LC3A; ATG8E; LC3; LC3A; MAP1ALC3; MAP1BLC3; LC3A/LC3B

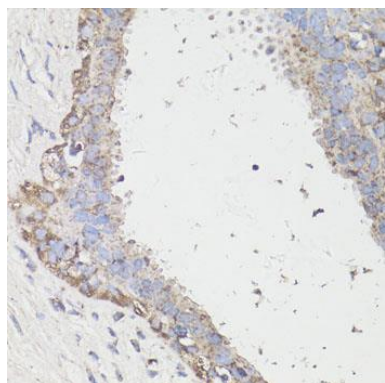
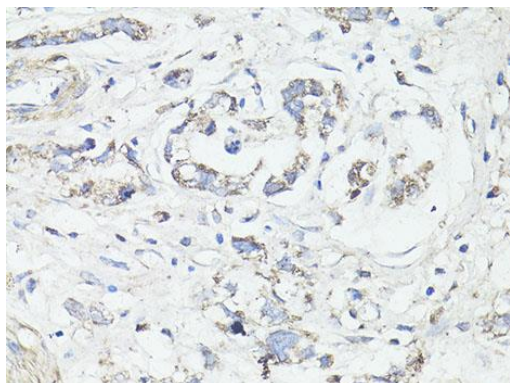
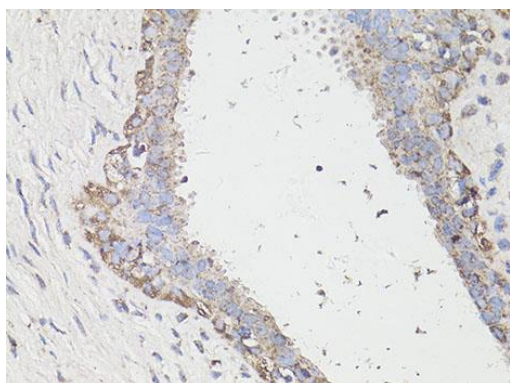
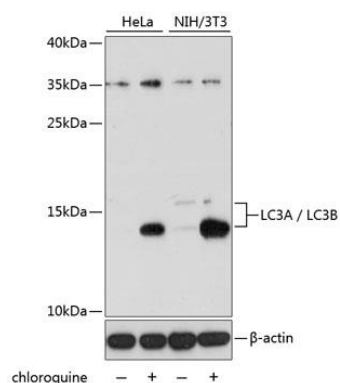
Immunogen:

Recombinant fusion protein containing a sequence corresponding to amino acids 1-125 of human LC3A / LC3B (NP_073729.1).

Storage:

Store at -20°C. Avoid freeze / thaw cycles. Buffer: PBS with 0.02% sodium azide, 50% glycerol, pH7.3.

Product Images



Western blot analysis of extracts of various cell lines, using LC3A/LC3B antibody (CAB15591) at 1:1000 dilution. HeLa cells were treated by Chloroquine (50 uM) for 20 hours. NIH/3T3 cells were treated by Chloroquine (50 uM) for 20 hours. Secondary antibody: HRP Goat Anti-Rabbit IgG (H+L) (CABS014) at 1:10000 dilution. Lysates/proteins: 25ug per lane. Blocking buffer: 3% nonfat dry milk in TBST. Detection: ECL Enhanced Kit (CABM00021). Exposure time: 60s.

Immunohistochemistry of paraffin-embedded human breast cancer using LC3A / LC3B antibody (CAB15591) at dilution of 1:100 (40x lens).

Immunohistochemistry of paraffin-embedded human gastric cancer using LC3A / LC3B antibody (CAB15591) at dilution of 1:100 (40x lens).

Immunohistochemistry of paraffin-embedded human mammary cancer using LC3A / LC3B antibody (CAB15591) at dilution of 1:100 (40x lens).