

PDE10A Rabbit Polyclonal Antibody



CAB15597

Product Information

Size:

20uL, 50uL, 100uL, 200uL

Observed MW:

88kDa

Calculated MW:

88kDa/89kDa

Applications:

WB

Reactivity:

Mouse, Rat

Protein Background

The protein encoded by this gene belongs to the cyclic nucleotide phosphodiesterase family. It plays a role in signal transduction by regulating the intracellular concentration of cyclic nucleotides. This protein can hydrolyze both cAMP and cGMP to the corresponding nucleoside 5' monophosphate, but has higher affinity for cAMP, and is more efficient with cAMP as substrate. Alternatively spliced transcript variants have been described for this gene.

Immunogen information

Gene ID:

10846

Uniprot

Q9Y233

Synonyms:

PDE10A; ADSD2; HSPDE10A; IOLOD; LINC00473; PDE10A19

Antibody Information

Recommended dilutions:

WB 1:500 - 1:2000

Source:

Rabbit

Isotype:

IgG

Purification:

Affinity purification

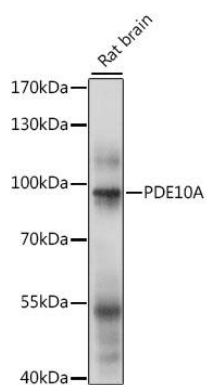
Immunogen:

Recombinant fusion protein containing a sequence corresponding to amino acids 23-200 of human PDE10A (NP_001124162.1).

Storage:

Store at -20°C. Avoid freeze / thaw cycles. Buffer: PBS with 0.02% sodium azide, 50% glycerol, pH7.3.

Product Images



Western blot analysis of extracts of rat brain, using PDE10A antibody (CAB15597) at 1:1000 dilution. Secondary antibody: HRP Goat Anti-Rabbit IgG (H+L) (CABS014) at 1:10000 dilution. Lysates/proteins: 25ug per lane. Blocking buffer: 3% nonfat dry milk in TBST. Detection: ECL Basic Kit (CABM00020). Exposure time: 5s.