

COL2A1 Rabbit Polyclonal Antibody



CAB1560

Product Information

Size:

20uL, 50uL, 100uL, 200uL

Observed MW:

141kDa

Calculated MW:

29kDa/134kDa/141kDa

Applications:

WB IHC

Reactivity:

Human, Mouse,

Protein Background

This gene encodes the alpha-1 chain of type II collagen, a fibrillar collagen found in cartilage and the vitreous humor of the eye. Mutations in this gene are associated with achondrogenesis, chondrodysplasia, early onset familial osteoarthritis, SED congenita, Langer-Saldino achondrogenesis, Kniest dysplasia, Stickler syndrome type I, and spondyloepimetaphyseal dysplasia Strudwick type. In addition, defects in processing chondrocalcin, a calcium binding protein that is the C-propeptide of this collagen molecule, are also associated with chondrodysplasia. There are two transcripts identified for this gene.

Immunogen information

Gene ID:

1280

Uniprot

P02458

Synonyms:

COL2A1; ANFH; AOM; COL11A3; SEDC; STL1

Antibody Information

Recommended dilutions:

WB 1:500 - 1:2000 IHC 1:50
- 1:200

Source:

Rabbit

Isotype:

IgG

Purification:

Affinity purification

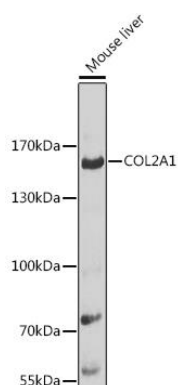
Immunogen:

Recombinant fusion protein containing a sequence corresponding to amino acids 873-1072 of human COL2A1 (NP_149162.2).

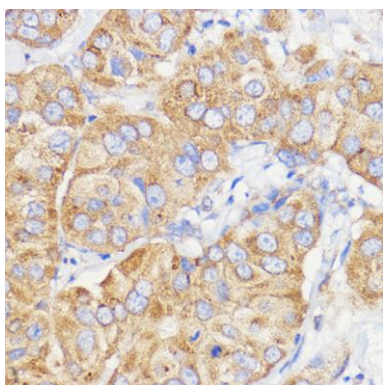
Storage:

Store at -20°C. Avoid freeze / thaw cycles. Buffer: PBS with 0.02% sodium azide, 50% glycerol, pH7.3.

Product Images



Western blot analysis of extracts of mouse liver, using COL2A1 antibody (CAB1560) at 1:1000 dilution. Secondary antibody: HRP Goat Anti-Rabbit IgG (H+L) (CABS014) at 1:10000 dilution. Lysates/proteins: 25ug per lane. Blocking buffer: 3% nonfat dry milk in TBST. Detection: ECL Basic Kit (CABM00020). Exposure time: 30s.



Immunohistochemistry of paraffin-embedded Human breast cancer using COL2A1 Rabbit pAb (CAB1560) at dilution of 1:100 (40x lens).