

POLRMT Rabbit Polyclonal Antibody



CAB15605

Product Information

Size:

20uL, 50uL, 100uL, 200uL

Observed MW:

139kDa

Calculated MW:

138kDa

Applications:

WB IF IP

Reactivity:

Human, Rat

Protein Background

This gene encodes a mitochondrial DNA-directed RNA polymerase. The gene product is responsible for mitochondrial gene expression as well as for providing RNA primers for initiation of replication of the mitochondrial genome. Although this polypeptide has the same function as the three nuclear DNA-directed RNA polymerases, it is more closely related to RNA polymerases of phage and mitochondrial polymerases of lower eukaryotes.

Immunogen information

Gene ID:

5442

Uniprot

O00411

Synonyms:

POLRMT; APOLMT; MTRNAP; MTRPOL; h-mtRPOL

Antibody Information

Recommended dilutions:

WB 1:500 - 1:2000 IF 1:50 -
1:200 IP 1:50 - 1:100

Source:

Rabbit

Isotype:

IgG

Purification:

Affinity purification

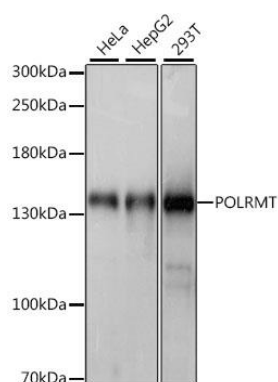
Immunogen:

Recombinant fusion protein containing a sequence corresponding to amino acids 42-230 of human POLRMT (NP_005026.3).

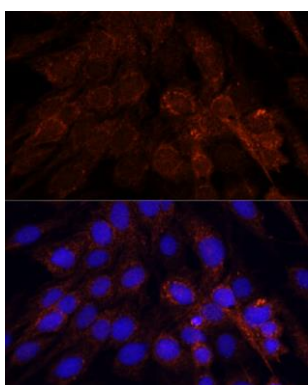
Storage:

Store at -20°C. Avoid freeze / thaw cycles. Buffer: PBS with 0.02% sodium azide, 50% glycerol, pH7.3.

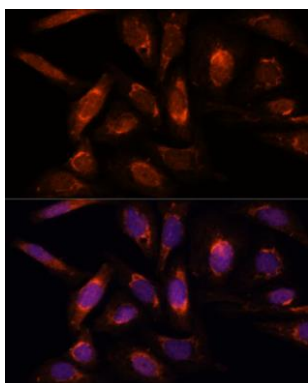
Product Images



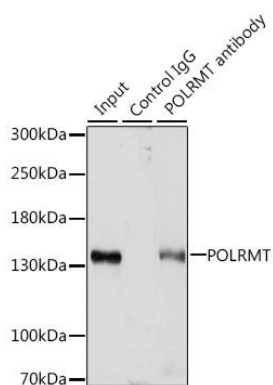
Western blot analysis of extracts of various cell lines, using POLRMT antibody (CAB15605) at 1:1000 dilution. Secondary antibody: HRP Goat Anti-Rabbit IgG (H+L) (CABS014) at 1:10000 dilution. Lysates/proteins: 25ug per lane. Blocking buffer: 3% nonfat dry milk in TBST. Detection: ECL Basic Kit (CABM00020). Exposure time: 1s.



Immunofluorescence analysis of C6 cells using POLRMT antibody (CAB15605) at dilution of 1:100. Blue: DAPI for nuclear staining.



Immunofluorescence analysis of U-2 OS cells using POLRMT antibody (CAB15605) at dilution of 1:100. Blue: DAPI for nuclear staining.



Immunoprecipitation analysis of 200ug extracts of HepG2 cells, using 3 ug POLRMT antibody (CAB15605). Western blot was performed from the immunoprecipitate using POLRMT antibody (CAB15605) at a dilution of 1:1000.