

DNASE1L3 Rabbit Polyclonal Antibody



CAB15608

Product Information

Size:

20uL, 50uL, 100uL, 200uL

Observed MW:

31kDa

Calculated MW:

31kDa/35kDa

Applications:

WB

Reactivity:

Mouse

Protein Background

This gene encodes a member of the deoxyribonuclease I family. The encoded protein hydrolyzes DNA, is not inhibited by actin, and mediates the breakdown of DNA during apoptosis. Mutations in this gene are a cause of systemic lupus erythematosus-16. Alternatively spliced transcript variants encoding multiple isoforms have been observed for this gene.

Immunogen information

Gene ID:

1776

Uniprot

Q13609

Synonyms:

DNASE1L3; DHP2; DNAS1L3; LSD; SLEB16

Antibody Information

Recommended dilutions:

WB 1:500 - 1:2000

Source:

Rabbit

Isotype:

IgG

Purification:

Affinity purification

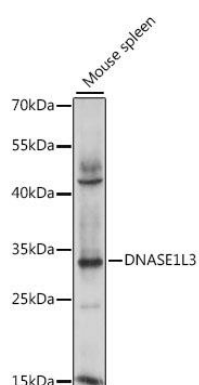
Immunogen:

Recombinant fusion protein containing a sequence corresponding to amino acids 21-281 of human DNASE1L3 (NP_004935.1).

Storage:

Store at -20°C. Avoid freeze / thaw cycles. Buffer: PBS with 0.02% sodium azide, 50% glycerol, pH7.3.

Product Images



Western blot analysis of extracts of mouse spleen, using DNASE1L3 antibody (CAB15608) at 1:1000 dilution. Secondary antibody: HRP Goat Anti-Rabbit IgG (H+L) (CABS014) at 1:10000 dilution. Lysates/proteins: 25ug per lane. Blocking buffer: 3% nonfat dry milk in TBST. Detection: ECL Basic Kit (CABM00020). Exposure time: 90s.