

ATG12 Rabbit Polyclonal Antibody



CAB15609

Product Information

Size:

20uL, 50uL, 100uL, 200uL

Observed MW:

55KDa

Calculated MW:

7kDa/15kDa

Applications:

WB

Reactivity:

Human, Rat

Protein Background

Autophagy is a process of bulk protein degradation in which cytoplasmic components, including organelles, are enclosed in double-membrane structures called autophagosomes and delivered to lysosomes or vacuoles for degradation. ATG12 is the human homolog of a yeast protein involved in autophagy (Mizushima et al., 1998 [PubMed 9852036]).

Immunogen information

Gene ID:

9140

Uniprot

O94817

Synonyms:

ATG12; APG12; APG12L; FBR93; HAPG12; Apg12

Antibody Information

Recommended dilutions:

WB 1:500 - 1:2000

Source:

Rabbit

Isotype:

IgG

Purification:

Affinity purification

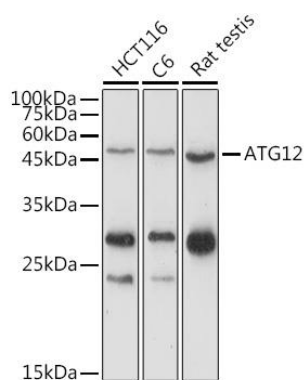
Immunogen:

A synthetic peptide corresponding to a sequence within amino acids 1-74 of human ATG12 (NP_001264712.1).

Storage:

Store at -20°C. Avoid freeze / thaw cycles. Buffer: PBS with 0.02% sodium azide, 50% glycerol, pH7.3.

Product Images



Western blot analysis of extracts of various cell lines, using ATG12 antibody (CAB15609) at 1:1000 dilution. Secondary antibody: HRP Goat Anti-Rabbit IgG (H+L) (CABS014) at 1:10000 dilution. Lysates/proteins: 25ug per lane. Blocking buffer: 3% nonfat dry milk in TBST. Detection: ECL Enhanced Kit (CABM00021). Exposure time: 180s.