

YTHDF2 Rabbit Polyclonal Antibody



CAB15616

Product Information

Size:

20uL, 50uL, 100uL, 200uL

Observed MW:

62kDa

Calculated MW:

56kDa/62kDa

Applications:

WB IHC

Reactivity:

Human, Mouse, Rat

Antibody Information

Recommended dilutions:

WB 1:500 - 1:2000 IHC 1:50
- 1:200

Source:

Rabbit

Isotype:

IgG

Purification:

Affinity purification

Protein Background

This gene encodes a member of the YTH (YT521-B homology) superfamily containing YTH domain. The YTH domain is typical for the eukaryotes and is particularly abundant in plants. The YTH domain is usually located in the middle of the protein sequence and may function in binding to RNA. In addition to a YTH domain, this protein has a proline rich region which may be involved in signal transduction. An Alu-rich domain has been identified in one of the introns of this gene, which is thought to be associated with human longevity. In addition, reciprocal translocations between this gene and the Runx1 (AML1) gene on chromosome 21 has been observed in patients with acute myeloid leukemia. This gene was initially mapped to chromosome 14, which was later turned out to be a pseudogene. Alternatively spliced transcript variants encoding different isoforms have been identified in this gene.

Immunogen information

Gene ID:

51441

Uniprot

Q9Y5A9

Synonyms:

YTHDF2; CAHL; HGRG8; NY-REN-2

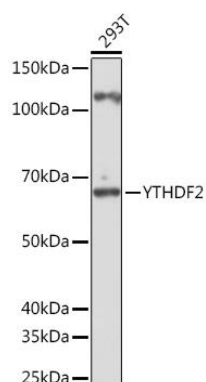
Immunogen:

Recombinant fusion protein containing a sequence corresponding to amino acids 1-200 of human YTHDF2 (NP_057342.2).

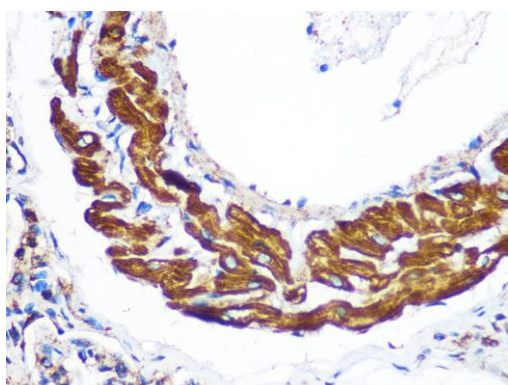
Storage:

Store at -20°C. Avoid freeze / thaw cycles. Buffer: PBS with 0.02% sodium azide, 50% glycerol, pH7.3.

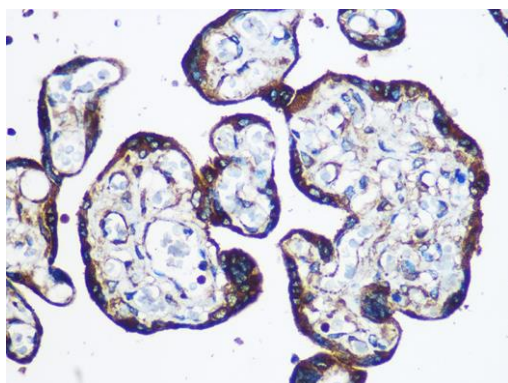
Product Images



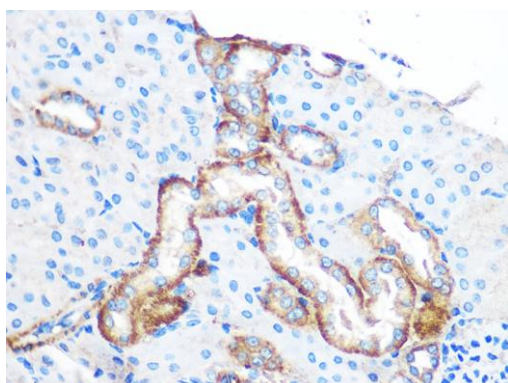
Western blot analysis of extracts of 293T cells, using YTHDF2 Rabbit pAb (CAB15616) at 1:1000 dilution. Secondary antibody: HRP Goat Anti-Rabbit IgG (H+L) (CABS014) at 1:10000 dilution. Lysates/proteins: 25ug per lane. Blocking buffer: 3% nonfat dry milk in TBST. Detection: ECL Basic Kit (CABM00020). Exposure time: 30s.



Immunohistochemistry of paraffin-embedded Rat lung using YTHDF2 antibody (CAB15616) at dilution of 1:100 (40x lens).



Immunohistochemistry of paraffin-embedded Human placenta using YTHDF2 antibody (CAB15616) at dilution of 1:100 (40x lens).



Immunohistochemistry of paraffin-embedded Mouse kidney using YTHDF2 antibody (CAB15616) at dilution of 1:100 (40x lens).