

# Acetyl-Histone H2B-K12 Rabbit Polyclonal Antibody

## CAB15619



### Product Information

**Size:**

20uL, 50uL, 100uL, 200uL

**Observed MW:**

14kDa

**Calculated MW:**

13kDa

**Applications:**

WB IHC IF

**Reactivity:**

Human, Mouse, Rat

### Antibody Information

**Recommended dilutions:**

WB 1:500 - 1:2000 IHC 1:50  
- 1:200 IF 1:50 - 1:200

**Source:**

Rabbit

**Isotype:**

IgG

**Purification:**

Affinity purification

### Protein Background

Histones are basic nuclear proteins that are responsible for the nucleosome structure of the chromosomal fiber in eukaryotes. Two molecules of each of the four core histones (H2A, H2B, H3, and H4) form an octamer, around which approximately 146 bp of DNA is wrapped in repeating units, called nucleosomes. The linker histone, H1, interacts with linker DNA between nucleosomes and functions in the compaction of chromatin into higher order structures. This gene encodes a replication-dependent histone that is a member of the histone H2B family, and generates two transcripts through the use of the conserved stem-loop termination motif, and the polyA addition motif. The protein has antibacterial and antifungal antimicrobial activity.

### Immunogen information

**Gene ID:**

8349

**Uniprot**

Q16778

**Synonyms:**

GL105; H2B; H2B.1; H2BFQ; H2BGL105; H2BQ; Histone H2B;  
HIST2H2BE

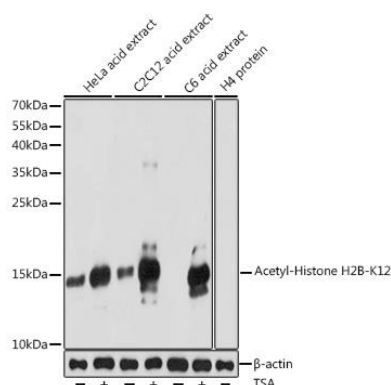
**Immunogen:**

A synthetic acetylated peptide around K12 of human Histone H2B (NP\_003519.1).

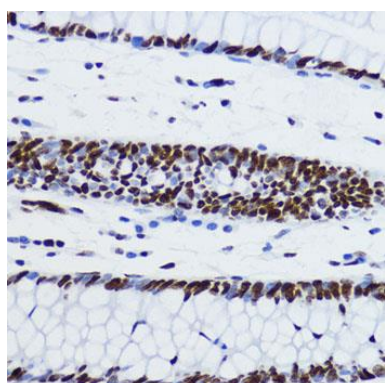
**Storage:**

Store at -20°C. Avoid freeze / thaw cycles. Buffer: PBS with 0.02% sodium azide, 50% glycerol, pH7.3.

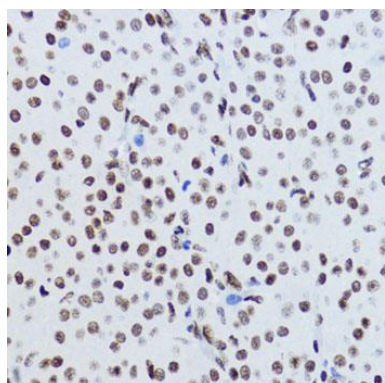
## Product Images



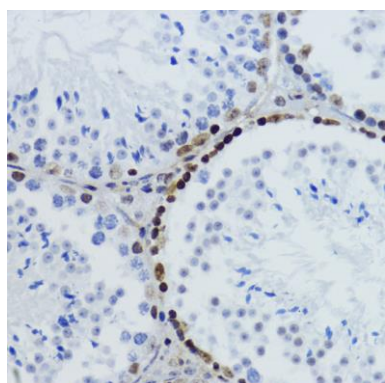
Western blot analysis of extracts of various cell lines, using Acetyl-Histone H2B-K12 antibody (CAB15619) at 1:1000 dilution. HeLa cells and C2C12 cells and C6 cells were treated by TSA (1  $\mu$ M) at 37°C for 18 hours. Secondary antibody: HRP Goat Anti-Rabbit IgG (H+L) (CABS014) at 1:10000 dilution. Lysates/proteins: 25 $\mu$ g per lane. Blocking buffer: 3% nonfat dry milk in TBST. Detection: ECL Basic Kit (CABM00020). Exposure time: 90s.



Immunohistochemistry of paraffin-embedded human colon using Acetyl-Histone H2B-K12 antibody (CAB15619) at dilution of 1:200 (40x lens).



Immunohistochemistry of paraffin-embedded rat ovary using Acetyl-Histone H2B-K12 antibody (CAB15619) at dilution of 1:200 (40x lens).



Immunohistochemistry of paraffin-embedded mouse testis using Acetyl-Histone H2B-K12 antibody (CAB15619) at dilution of 1:200 (40x lens).