

# Acetyl-Histone H2B-K5 Rabbit Polyclonal Antibody

CAB15621



## Product Information

### Size:

20uL, 50uL, 100uL, 200uL

### Observed MW:

16kDa

### Calculated MW:

### Applications:

WB IHC IF IP ChIP

### Reactivity:

Human, Mouse, Rat

## Antibody Information

### Recommended dilutions:

WB 1:500 - 1:2000 IHC 1:50  
- 1:200 IF 1:50 - 1:200 IP  
1:50 - 1:100 ChIP 1:50 -  
1:100

### Source:

Rabbit

### Isotype:

IgG

### Purification:

Affinity purification

## Protein Background

## Immunogen information

### Gene ID:

3017/8349

### Uniprot

### Synonyms:

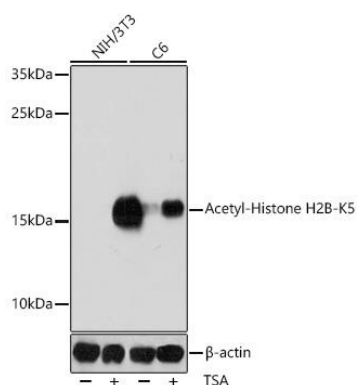
### Immunogen:

A synthetic acetylated peptide corresponding to residues surrounding K5 of human Histone H2B

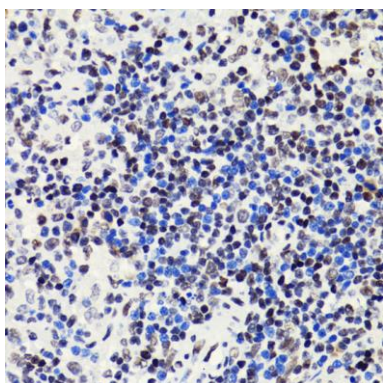
### Storage:

Store at -20°C. Avoid freeze / thaw cycles. Buffer: PBS with 0.02% sodium azide, 50% glycerol, pH7.3.

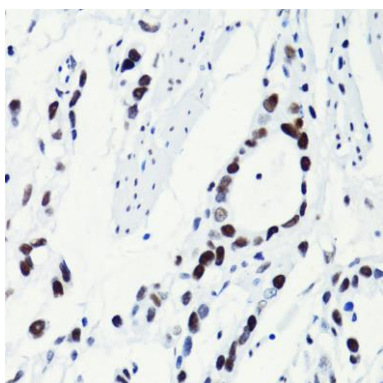
## Product Images



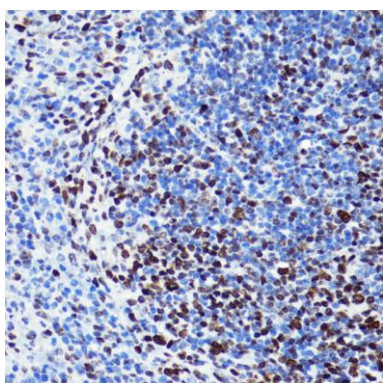
Western blot analysis of extracts of various cell lines, using Acetyl-Histone H2B-K5 antibody (CAB15621) at 1:1000 dilution. NIH/3T3 cells were treated by TSA (1  $\mu$ M) at 37°C for 18 hours. C6 cells were treated by TSA (1  $\mu$ M) at 37°C for 18 hours. Secondary antibody: HRP Goat Anti-Rabbit IgG (H+L) (CABS014) at 1:10000 dilution. Lysates/proteins: 25  $\mu$ g per lane. Blocking buffer: 3% BSA. Detection: ECL Basic Kit (CABM00020). Exposure time: 60s.



Immunohistochemistry of paraffin-embedded rat spleen using Acetyl-Histone H2B-K5 antibody (CAB15621) at dilution of 1:100 (40x lens).



Immunohistochemistry of paraffin-embedded human gastric cancer using Acetyl-Histone H2B-K5 antibody (CAB15621) at dilution of 1:100 (40x lens).



Immunohistochemistry of paraffin-embedded mouse spleen using Acetyl-Histone H2B-K5 antibody (CAB15621) at dilution of 1:100 (40x lens).