

Acetyl-Histone H2B-K15 Rabbit Polyclonal Antibody

CAB15622



Product Information

Size:

20uL, 50uL, 100uL, 200uL

Observed MW:

15kDa

Calculated MW:**Applications:**

WB IHC IF IP

Reactivity:

Human, Mouse, Rat

Antibody Information

Recommended dilutions:

WB 1:500 - 1:2000 IHC 1:50
- 1:200 IF 1:50 - 1:100 IP
1:50 - 1:200

Source:

Rabbit

Isotype:

IgG

Purification:

Affinity purification

Protein Background

Immunogen information

Gene ID:

3017/8349

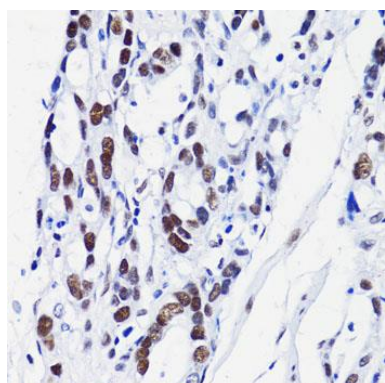
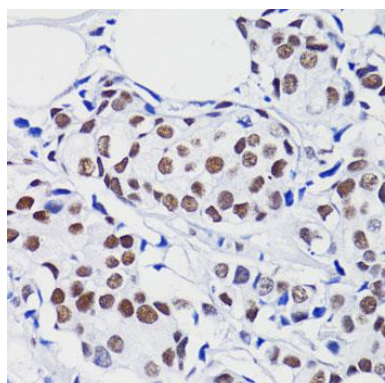
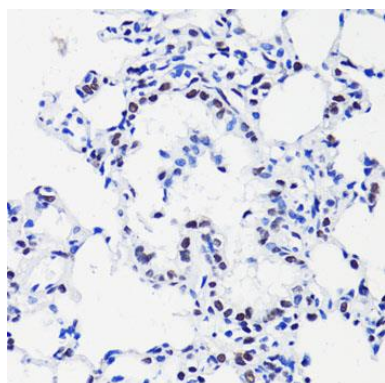
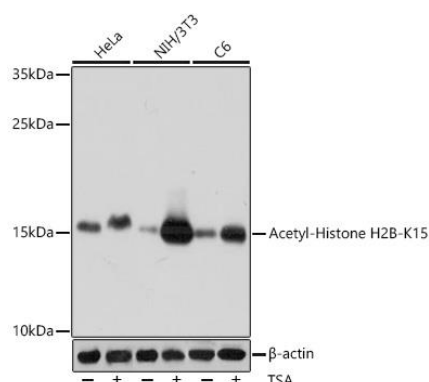
Uniprot**Synonyms:****Immunogen:**

A synthetic acetylated peptide corresponding to residues surrounding K15 of human Histone H2B

Storage:

Store at -20°C. Avoid freeze / thaw cycles. Buffer: PBS with 0.02% sodium azide, 50% glycerol, pH7.3.

Product Images



Western blot analysis of extracts of various cell lines, using Acetyl-Histone H2B-K15 antibody (CAB15622) at 1:1000 dilution. HeLa cells were treated by TSA (1 μ M) at 37°C for 18 hours. NIH/3T3 cells were treated by TSA (1 μ M) at 37°C for 18 hours. C6 cells were treated by TSA (1 μ M) at 37°C for 18 hours. Secondary antibody: HRP Goat Anti-Rabbit IgG (H+L) (CABS014) at 1:10000 dilution. Lysates/proteins: 25 μ g per lane. Blocking buffer: 3% BSA. Detection: ECL Basic Kit (CABM00020). Exposure time: 10s.

Immunohistochemistry of paraffin-embedded rat lung using H2B K15ac antibody (CAB15622) at dilution of 1:100 (40x lens).

Immunohistochemistry of paraffin-embedded human breast cancer using H2B K15ac antibody (CAB15622) at dilution of 1:100 (40x lens).

Immunohistochemistry of paraffin-embedded human gastric cancer using H2B K15ac antibody (CAB15622) at dilution of 1:100 (40x lens).