

ODF2 Rabbit Polyclonal Antibody



CAB15630

Product Information

Size:

20uL, 50uL, 100uL, 200uL

Observed MW:

80kDa

Calculated MW:

66kDa/73kDa/75kDa/80kDa/
88kDa/93kDa/95kDa

Applications:

WB IF

Reactivity:

Human, Mouse, Rat

Antibody Information

Recommended dilutions:

WB 1:500 - 1:2000 IF 1:50 -
1:200

Source:

Rabbit

Isotype:

IgG

Purification:

Affinity purification

Protein Background

The outer dense fibers are cytoskeletal structures that surround the axoneme in the middle piece and principal piece of the sperm tail. The fibers function in maintaining the elastic structure and recoil of the sperm tail as well as in protecting the tail from shear forces during epididymal transport and ejaculation. Defects in the outer dense fibers lead to abnormal sperm morphology and infertility. This gene encodes one of the major outer dense fiber proteins. Alternative splicing results in multiple transcript variants. The longer transcripts, also known as 'Cenexins', encode proteins with a C-terminal extension that are differentially targeted to somatic centrioles and thought to be crucial for the formation of microtubule organizing centers.

Immunogen information

Gene ID:

4957

Uniprot

Q5BJF6

Synonyms:

ODF2; CT134; ODF2/1; ODF2/2; ODF84

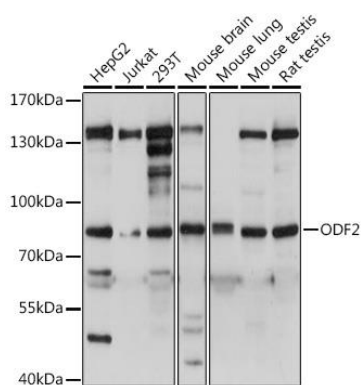
Immunogen:

Recombinant fusion protein containing a sequence corresponding to amino acids 630-829 of human ODF2 (NP_702911.1).

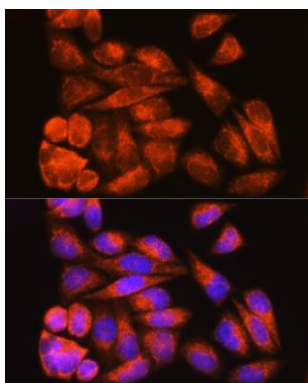
Storage:

Store at -20°C. Avoid freeze / thaw cycles. Buffer: PBS with 0.02% sodium azide, 50% glycerol, pH7.3.

Product Images



Western blot analysis of extracts of various cell lines, using ODF2 antibody (CAB15630) at dilution. Secondary antibody: HRP Goat Anti-Rabbit IgG (H+L) (CABS014) at 1:10000 dilution. Lysates/proteins: 25ug per lane. Blocking buffer: 3% nonfat dry milk in TBST. Detection: ECL Basic Kit (CABM00020). Exposure time: 3s.



Immunofluorescence analysis of HeLa cells using ODF2 Rabbit pAb (CAB15630) at dilution of 1:100. Blue: DAPI for nuclear staining.