

# SLC25A5 Rabbit Polyclonal Antibody



CAB15639

---

## Product Information

### Size:

20uL, 50uL, 100uL, 200uL

### Observed MW:

33kDa

### Calculated MW:

32kDa

### Applications:

WB, IHC, IF

### Reactivity:

Human, Mouse, Rat

### Category:

Polyclonal Antibodies

## Antibody Information

### Recommended dilutions:

WB 1:500 - 1:2000

IHC 1:50 - 1:200

IF 1:50 - 1:200

### Source:

Rabbit

### Isotype:

IgG

### Purification:

Affinity purification

## Protein Background

This gene is a member of the mitochondrial carrier subfamily of solute carrier protein genes. The product of this gene functions as a gated pore that translocates ADP from the cytoplasm into the mitochondrial matrix and ATP from the mitochondrial matrix into the cytoplasm. The protein forms a homodimer embedded in the inner mitochondria membrane. Suppressed expression of this gene has been shown to induce apoptosis and inhibit tumor growth. The human genome contains several non-transcribed pseudogenes of this gene.

## Immunogen information

### Gene ID:

292

### Uniprot

P05141

### Synonyms:

SLC25A5; 2F1; AAC2; ANT2; T2; T3

### Immunogen:

A synthetic peptide corresponding to a sequence within amino acids 150-250 of human SLC25A5 (NP\_001143.2).

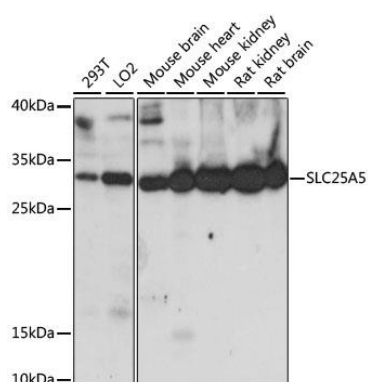
### Storage:

Store at -20°C. Avoid freeze / thaw cycles.

Buffer: PBS with 0.02% sodium azide, 50% glycerol, pH7.3.

## Product Images

---



Western blot analysis of extracts of various cell lines, using SLC25A5 antibody (CAB15639) at 1:1000 dilution.

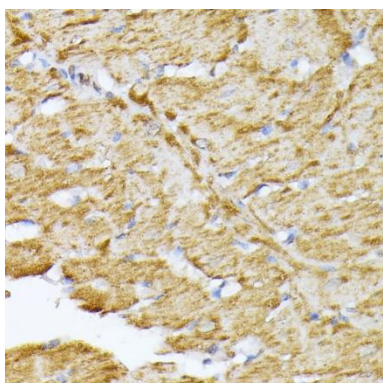
Secondary antibody: HRP Goat Anti-Rabbit IgG (H+L) (CABS014) at 1:10000 dilution.

Lysates/proteins: 25ug per lane.

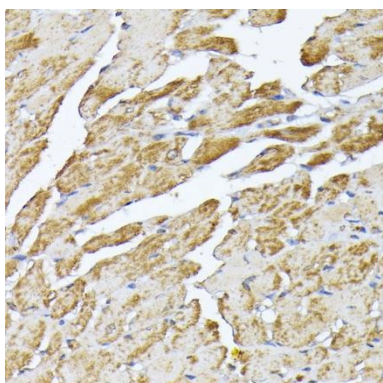
Blocking buffer: 3% non-fat dry milk in TBST.

Detection: ECL Basic Kit (AbGn00020).

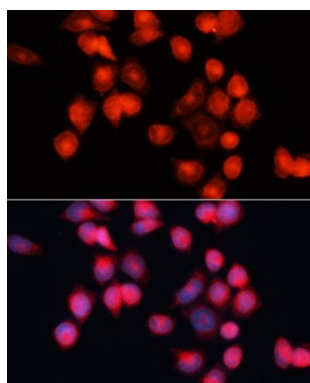
Exposure time: 60s.



Immunohistochemistry of paraffin-embedded rat heart using SLC25A5 antibody (CAB15639) at dilution of 1:100 (40x lens).



Immunohistochemistry of paraffin-embedded mouse heart using SLC25A5 antibody (CAB15639) at dilution of 1:100 (40x lens).



Immunofluorescence analysis of HeLa cells using SLC25A5 antibody (CAB15639) at dilution of 1:100 (40x lens). Blue: DAPI for nuclear staining.